

FACT BOOK

2005-06

*Office of Institutional
Research and Effectiveness*

October 2006

Middletown Campus
173 Skirmisher Lane
Middletown, VA 22645

Fauquier Campus
6480 College Street
Warrenton, VA 20187

Luray-Page County Center
320 North Hawksbill Street
Luray, VA 22835

www.lfcc.edu



FOREWORD

The Office of Institutional Research and Effectiveness (OIRE) is pleased to present the Lord Fairfax Community College 2005-06 Fact Book, an annual overview of students, programs, services, personnel and community. This edition reflects year-end data from the 2005-06 academic year. Much of the information is cumulative and is presented for a five- or ten-year period. Other information is shown in a single-year format.

This edition is designed to be a readily-available source of information but is not all-inclusive. Instead, this report captures and summarizes information from various units and individuals to educate stakeholders about Lord Fairfax Community College.

An electronic version of this document, as well as other information, is available on the OIRE Web page at www.lfcc.edu/Directory/OIRE.

The OIRE would appreciate your comments and suggestions for future issues. Please send your input via e-mail to Lisa Lofton, director of institutional research and effectiveness, at llofton@lfcc.edu or (540) 868-7066.

Table of Contents

FOREWORD	1
TABLE OF CONTENTS	2
LIST OF TABLES	3
LIST OF FIGURES	4
LORD FAIRFAX COMMUNITY COLLEGE	5
STUDENT INFORMATION	7
STUDENT ENROLLMENT	8
STUDENT PROFILE	10
STUDENT ENROLLMENT BY DISCIPLINE	21
RETENTION RATES	22
GRADUATES	23
ANNUAL NUMBER OF GRADUATES	24
WORKFORCE SOLUTIONS AND CONTINUING EDUCATION	27
STUDENT RESOURCES	30
FINANCIAL AID	31
TRIO GRANT	32
LIBRARIES AND LEARNING RESOURCES	33
PERSONNEL	34
INSTRUCTIONAL FACULTY	35
ADMINISTRATION AND STAFF	35
SERVICE REGION	37
THE SERVICE REGION	38
DEFINITIONS	46

LIST OF TABLES

Table 1. <i>Headcount and Full-Time Equivalent History</i> _____	9
Table 2. <i>Fall Semester FTES and Headcount</i> _____	10
Table 3. <i>Year of High School Graduation of Fall 2005 First Time Students</i> _____	11
Table 4. <i>Headcount by Gender</i> _____	12
Table 5. <i>Unduplicated Headcount Enrollment by Residence, 2005-06</i> _____	14
Table 6. <i>In-District Student Headcount by Region, Fall Semesters</i> _____	15
Table 7. <i>Age Populations by Residential Areas</i> _____	15
Table 8. <i>Headcount by Status</i> _____	16
Table 9. <i>Dual Enrollment Headcount and Full-time Equivalent</i> _____	16
Table 10. <i>Distance Learning Headcount and Full-Time Equivalent</i> _____	17
Table 11. <i>Headcount by Program Area</i> _____	17
Table 12. <i>Headcount of First Time Students</i> _____	18
Table 13. <i>Educational Objectives of Unclassified Students</i> _____	18
Table 14. <i>Headcount and Full-Time Equivalent by Full-Time/Part-Time</i> _____	18
Table 15. <i>Daytime vs. Evening Class Enrollment</i> _____	19
Table 16. <i>Students Enrolled in Developmental Courses</i> _____	20
Table 17. <i>Distribution of Program Placed Students by Curriculum and Award Type</i> _____	21
Table 18. <i>Fall-to-Spring Retention</i> _____	22
Table 19. <i>Fall-to-Fall Retention</i> _____	22
Table 20. <i>Graduate Awards</i> _____	24
Table 21. <i>Distribution of Awards by Curriculum</i> _____	25
Table 22. <i>Transfer Rate for Transferring in Virginia</i> _____	26
Table 23. <i>Workforce Solutions and Continuing Education Programs</i> _____	29
Table 24. <i>Financial Aid Summary</i> _____	31
Table 25. <i>Financial Aid Headcount and Full-Time Equivalent Summary</i> _____	31
Table 26. <i>Breakdown of Financial Aid Awards</i> _____	32
Table 27. <i>9-Month Faculty</i> _____	35
Table 28. <i>Administration</i> _____	35
Table 29. <i>Classified Staff</i> _____	36
Table 30. <i>Service Region Population Change</i> _____	39
Table 31. <i>Service Region Overview</i> _____	40
Table 32. <i>Virginia College Enrollment of LFCC Area Residents (Fall 2005)</i> _____	42
Table 33. <i>LFCC Market Penetration of Service Region</i> _____	43
Table 34. <i>Student Enrollment by In-State High Schools</i> _____	44
Table 35. <i>Enrollment Projections for Service Area</i> _____	45

LIST OF FIGURES

<i>Figure 1. Annual Full-time Equivalent and Unduplicated Headcount Trend</i>	8
<i>Figure 2. Fall Student Headcount and Full-Time Equivalent</i>	9
<i>Figure 3. Five Year Trend of Age Groups</i>	11
<i>Figure 4. Minority Student Enrollment Trends</i>	13
<i>Figure 5. Students Enrolled in Development Courses</i>	19
<i>Figure 6. Map of Service Region</i>	38

LORD FAIRFAX COMMUNITY COLLEGE

GENERAL INFORMATION

- Since its establishment in 1970, Lord Fairfax Community College has enrolled more than 80,000 students. Over 8,500 degrees and certificates have been awarded.
- LFCC offers over 70 degrees and certificate programs in a wide variety of disciplines, in addition to workforce preparation programs for employees and employers.
- LFCC's two campuses are located in Middletown and Fauquier, Va. and an outreach site, the Luray-Page County Center, is located in Luray, Va.
- LFCC's service region includes the populations of Clarke, Fauquier, Frederick, Page, Rappahannock, Shenandoah, and Warren counties as well as the City of Winchester.
- Governed by the Virginia Community College System (VCCS), based in Richmond, Va. and guided by the State Board for Community Colleges and VCCS chancellor, LFCC is one of 23 community colleges in Virginia.
- LFCC is accredited by the Commission on Colleges of the Southern Association of Colleges and Schools [1866 Southern Lane, Decatur, Georgia, 33003-4097; Telephone number (404) 679-4501] to award associate degrees.
- The College's 2005-06 annual maintenance and operations budget was nearly \$18 million.
- For 2005-06, a total of 7,683 unduplicated students were served or 3,103 full-time equivalent students (FTES).
- The College awarded nearly \$2.5 million in financial aid to 1,191 students in 2005-06.
- LFCC employs 57 full-time faculty members, 30 administrators and 74 classified staff. As many as 263 adjunct (part-time) faculty members are employed each semester.

MISSION

By 2007, LFCC will be a prominent comprehensive community college of exceptional quality.

VISION

LFCC enriches communities as we provide exemplary educational opportunities based on our core values.

VALUES

LFCC embraces the following core values:

Learning

We foster an environment that ignites and sustains a passion for lifelong learning.

High Performance

We are focused, responsive, collaborative and accountable.

Integrity

We exemplify honesty, character and respect for our communities.

Positive Spirit

We value creativity, enthusiasm and a “can-do” attitude.

Diversity

We honor the uniqueness of individuals and communities.

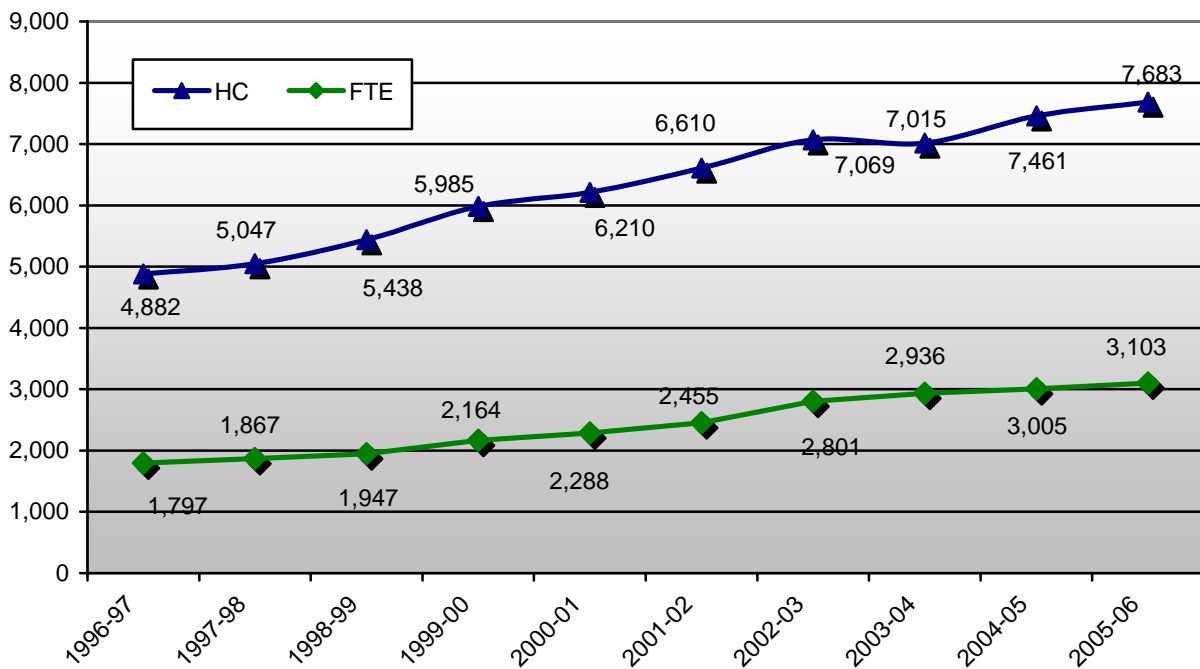
STUDENT INFORMATION

STUDENT ENROLLMENT

When Lord Fairfax Community College opened its doors in the fall of 1970, 577 students were enrolled. LFCC has shown a steady growth in enrollment ever since. Over the past decade, the annual headcount has grown nearly 62 percent and reached an unduplicated annual headcount enrollment of 7,683 credit students in 2005-06.

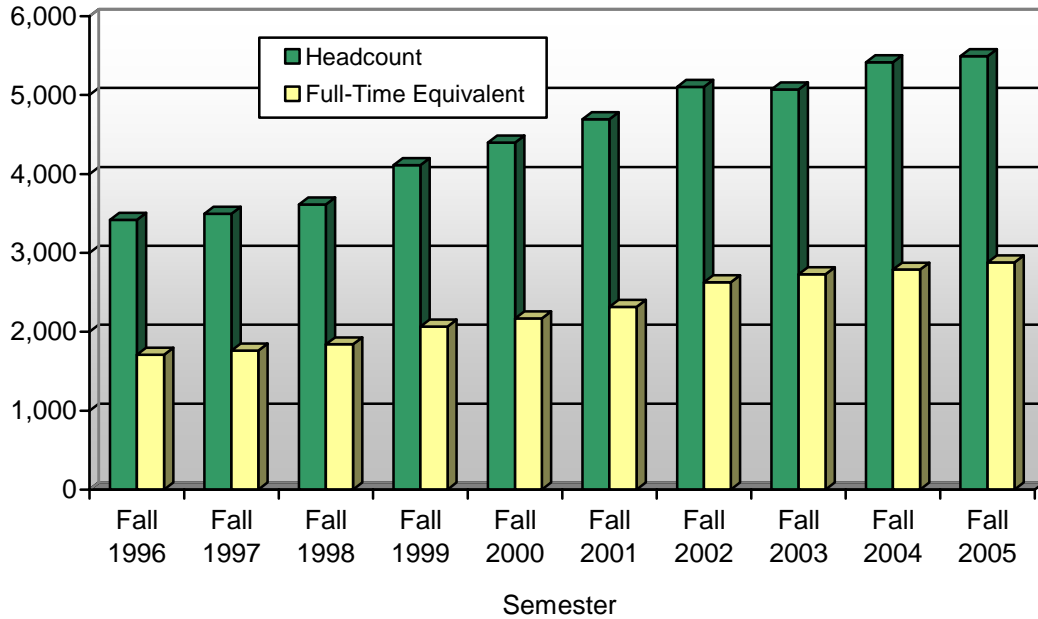
The full-time equivalent (FTE) is a standard metric to calculate student course enrollment. It is the conversion of the number of all students (whether part-time or full-time) into an equivalent number of full-time students. The FTE is calculated by dividing the total credit hours taken by all students in one term by 15, the course load for a full-time student. At LFCC, the annual FTE enrollment has continued to increase over time, reaching 3,103 for this academic year.

Figure 1. Annual Full-time Equivalent and Unduplicated Headcount Trend



The fall semester typically accounts for the largest portion of the annual enrollment. As shown below, the fall 2005 headcount grew 1.4 percent from the previous academic year. Overall, there has been progressive growth over the last 10 years of fall enrollment.

Figure 2. Fall Student Headcount and Full-Time Equivalent



The spring semester enrollment has also steadily increased while the summer term enrollment has been erratic, showing dips and growth in the last 10 years. Overall, the trend line for summer enrollment has maintained a positive upward movement.

Table 1. Headcount and Full-Time Equivalent History

Academic Year	Annual Unduplicated* Headcount and FTES		Semester Headcounts and FTES					
			Summer		Fall		Spring	
	HC	FTES	HC	FTES	HC	FTES	HC	FTES
2005-06	7,683	3,103	1,906	648	5,492	2,878	5,311	2,680
2004-05	7,461	3,005	1,765	636	5,416	2,809	4,969	2,568
2003-04	7,015	2,936	1,965	711	5,070	2,729	4,650	2,428
2002-03	7,069	2,801	1,831	636	5,101	2,640	4,581	2,360
2001-02	6,610	2,455	1,561	510	4,682	2,314	4,388	2,086
2000-01	6,210	2,285	1,497	474	4,398	2,167	3,989	1,929
1999-00	5,985	2,164	1,381	427	4,111	2,067	3,817	1,850
1998-99	5,438	1,947	1,297	404	3,612	1,841	3,335	1,649
1997-98	5,047	1,859	1,199	378	3,496	1,762	3,192	1,577
1996-97	4,882	1,793	1,094	353	3,414	1,710	3,097	1,522

*Unduplicated Annual Headcount is when a student is counted one time per academic year – Summer, Fall, and Spring.

The majority of LFCC students are taking classes at the Middletown Campus. Nearly 80 percent are students at Middletown, but the overall enrollment growth at LFCC is substantiated by the double-digit increase in the number of students at the Fauquier Campus.

Table 2. Fall Semester FTES and Headcount

Fall	Middletown Campus		Fauquier Campus		College Total	
	FTES	HC	FTES	HC	FTES	HC
2005	2,221	4,320	657	1,172	2,878	5,492
2004	2,222	4,371	587	1,045	2,809	5,416
2003	2,194	4,138	535	932	2,729	5,070
2002	2,126	4,162	514	939	2,640	5,101
2001	1,872	3,799	442	883	2,314	4,682

*Data were combined for both campuses.

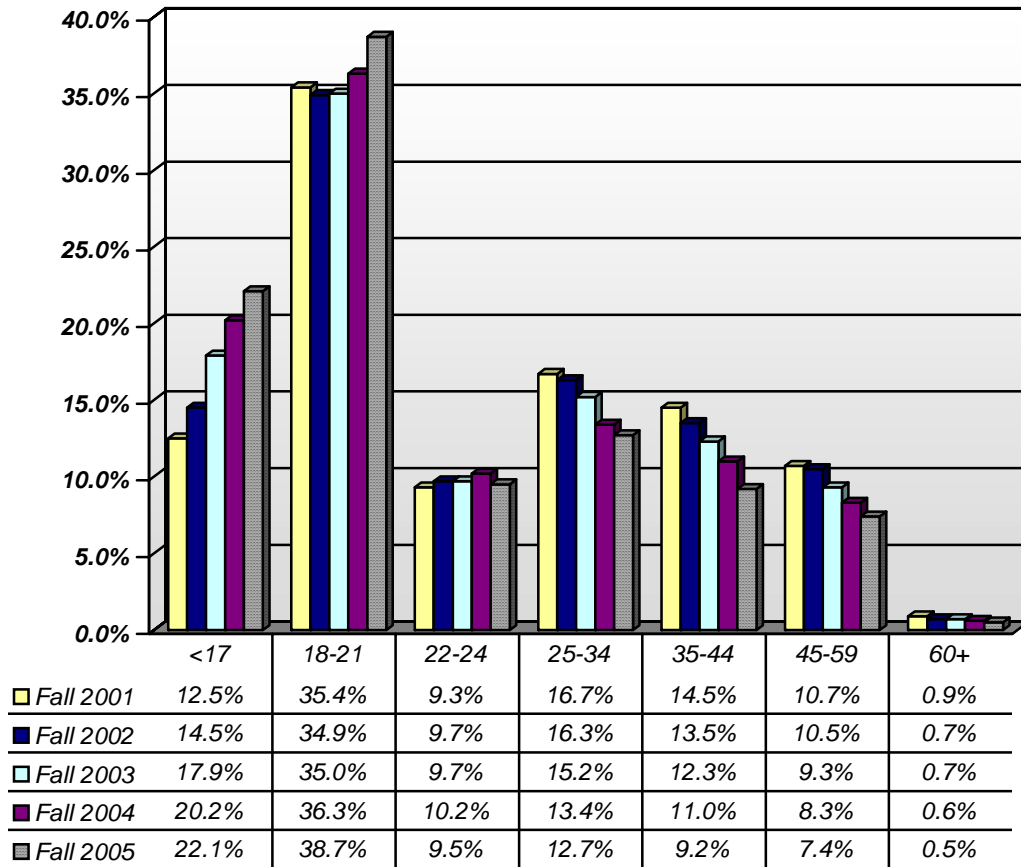
STUDENT PROFILE

Age Distribution

Overall, the average age of LFCC students has decreased in the last five years. The percentage of students 24 years of age and under has substantially increased. More than half of LFCC's students were in this age group in fall 2001. By fall 2005, the same group made up 70% of enrollment.

One out of five students at LFCC is under 18 years of age. This corresponds with the numbers of high school and home-schooled students in the dual enrolled courses. From fall 2001 to fall 2005, the number of students 18 and younger has nearly doubled. As LFCC continues to work with area high schools in expanding college-credit courses offered in the program, this age group will continue to make up a substantial part of LFCC's student body.

Figure 3. Five Year Trend of Age Groups



Source: VCCS SEB Report Table 11B, 2006.

The majority of first-time students come directly from high school, whether as a dual enrolled student or as a recent graduate.

Table 3. Year of High School Graduation of Fall 2005 First Time Students

	After 2005	2005	2004	2003	2002	2001	Prior to 2001	Unknown	Total
Full Time	49	284	31	5	3	3	30	0	405
Part Time	950	184	56	27	7	16	139	5	1,384
Total	999	468	87	32	10	19	169	5	1,789
Total %	55.8%	26.2%	4.9%	1.8%	0.6%	1.1%	9.4%	0.3%	

Source: VCCS, Report Table SEB03BBB, 2006.

Gender Distribution

Females make up the majority of the LFCC student population. The proportion has been relatively consistent at 62 percent of the total enrollment for the last five years. This reflects the national trend for two-year college students.

Table 4. Headcount by Gender

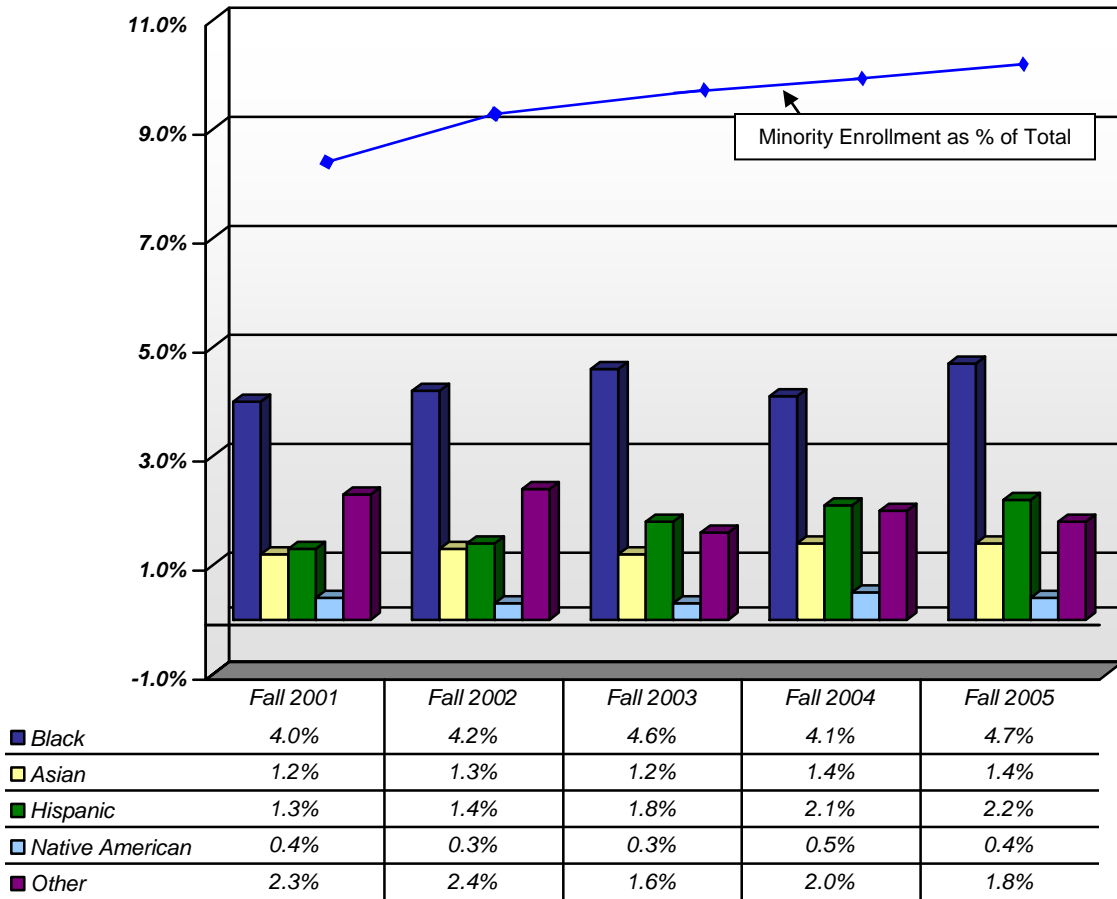
	Fall 2001		Fall 2002		Fall 2003		Fall 2004		Fall 2005	
	N	%	N	%	N	%	N	%	N	%
Men	1,750	37.4	1,969	38.6	1,896	37.4	2,014	37.2	2,111	38.4
Women	2,932	62.6	3,132	61.4	3,174	62.6	3,402	62.8	3,381	61.6
Total	4,682		5,101		5,070		5,416		5,492	
FULL-TIME										
Men	508	42.2	565	40.2	622	42.0	614	42.7	640	41.7
Women	695	57.8	842	59.8	858	58.0	857	58.3	895	58.3
Total	1,203		1,407		1,480		1,471		1,535	
PART-TIME										
Men	1,242	35.7	1,404	38.0	1,247	35.5	1,400	35.5	1,471	37.2
Women	2,237	64.3	2,290	62.0	2,316	64.5	2,545	64.5	2,486	62.8
Total	3,479		3,694		3,590		3,945		3,957	

Source: VCCS SEB Report Table 15, 2006.

Race Distribution

Minority enrollment at LFCC has steadily increased in the last five years, from 8 percent of the enrollment in 2000 to over 10 percent in fall 2005. At 10.5 percent, the minority enrollment is representative of the service area's racial composition.

Figure 4. Minority Student Enrollment Trends



Source: VCCS SEB Report Table 15, 2006.

Domicile

LFCC students primarily live in the service region. This covers the counties of Clarke, Fauquier, Frederick, Page, Rappahannock, Shenandoah, and Warren and the City of Winchester. Over 85 percent live within the service region while more than 95 percent of LFCC's students live within the state of Virginia. Most of the out-of-state students live in West Virginia. Increasing the selection of online courses has shown a positive relationship with the number of students who live outside of the service region as more students take part in distance learning.

Frederick County, with the largest number of residents in the LFCC service region (see population sizes in the *Service Region* section), contributes the largest number of students.

Over 25 percent of LFCC students live within the county. Students living in Frederick, Fauquier, and Shenandoah counties make up about half of the enrolled students.

Table 5. Unduplicated Headcount Enrollment by Residence, 2005-06

Locality			Gender		Ethnicity					Total	
	Day	Evening	Men	Women	White	Black	Other	Full-time	Part-time	N	%
Clarke	364	47	212	199	370	24	17	96	315	411	5.3
Fauquier	973	188	412	749	1,005	89	67	272	889	1,161	15.1
Frederick	1,581	366	762	1,185	1,769	80	98	485	1,462	1,947	25.3
Page	254	84	108	230	324	6	8	61	277	338	4.4
Rappahannock	130	20	63	87	141	3	6	23	127	150	2.0
Shenandoah	844	170	374	640	954	7	53	204	810	1,014	13.2
Warren	695	145	319	521	772	32	36	212	628	840	10.9
Winchester	601	108	258	451	596	54	59	176	533	709	9.2
Total In-District	5,442	1,128	2,508	4,062	5,931	295	344	1,529	5,041	6,570	85.5
Out of District	674	100	269	505	646	70	58	173	601	774	10.1
In State	6,116	1,228	2,777	4,567	6,577	365	402	1,702	5,642	7,344	95.6
Out of State	256	83	124	215	282	19	38	68	271	339	4.4
Total Enrollment	6,372	1,311	2,901	4,782	6,852	384	440	1,770	5,913	7,683	100.0

Source: VCCS UDT Report Table 8, 2006

The number of students from the individual localities has increased over the last 10 years. Just since fall 2001, the number of students from Clarke County has increased by 92 percent; from Shenandoah County, 52 percent. Some of this growth is a result of the aggressive expansion of the dual enrollment programs in these counties during that time period. The number of students living in Page County has increased over 50 percent in five years and is estimated to grow substantially due to the Luray-Page County Center opening in 2005-06.

Table 6. In-District Student Headcount by Region, Fall Semesters

Fall Semester	Clarke	% Clarke	Fauquier	% Fauquier	Frederick	% Frederick	Page	% Page	Rappahannock	% Rappahannock	Shenandoah	% Shenandoah	Warren	% Warren	Winchester	% Winchester	In District Total
2005	311	6.5	837	17.4	1449	30.1	216	4.5	94	2.0	751	15.6	624	12.9	537	11.1	4819
2004	350	7.2	752	15.4	1508	30.9	151	3.1	139	2.9	755	15.5	621	12.7	601	12.3	4877
2003	261	5.7	718	15.7	1510	33.1	121	2.7	82	1.8	647	14.2	610	13.4	611	13.4	4560
2002	160	4.0	731	18.3	1365	34.2	125	3.1	67	1.7	526	13.2	617	15.5	396	9.9	3987
2001	162	4.3	683	18.2	1322	35.2	140	3.8	74	2.0	426	11.3	561	14.9	692	10.4	3760
2000	158	4.5	628	17.8	1252	35.6	123	3.5	74	2.1	403	11.5	506	14.4	375	10.7	3519
1999	176	4.8	519	14.1	1330	36.0	138	3.7	83	2.2	498	13.5	505	13.7	442	12.0	3691
1998	133	4.1	343	10.5	1172	36.0	110	3.4	61	1.9	547	16.8	510	15.7	376	11.6	3252
1997	150	4.7	313	9.8	1114	35.0	111	3.5	77	2.4	553	17.4	480	15.1	382	12.0	3180
1996	169	5.4	275	8.7	1062	33.7	134	4.3	94	3.0	533	16.9	483	15.3	400	12.7	3150

Source: VCCS, Population Participation Rates by City and County Report.

Table 7. Age Populations by Residential Areas

Locality	<17		18-21		22-24		25-34		35-44		45-59		60+		Total
	N	%	N	%	N	%	N	%	N	%	N	%	N	%	N
Clarke County	165	53.1	79	25.4	18	5.8	19	6.1	11	3.5	19	6.1	--	0.0	311
Fauquier County	109	13.0	401	47.9	82	9.8	84	10.0	82	9.8	73	8.7	6	0.7	837
Frederick County	267	18.4	566	39.1	154	10.6	198	13.7	146	10.1	110	7.6	8	0.5	1,449
Page County	64	29.6	55	25.5	14	6.5	35	16.2	21	9.7	25	11.6	2	0.9	216
Rappahannock County	29	30.9	37	39.4	8	8.5	8	8.5	3	3.2	9	9.6	--	0.0	94
Shenandoah County	201	26.8	293	39.0	56	7.5	80	10.7	63	8.4	54	7.2	4	0.6	751
Warren County	118	18.9	258	41.3	58	9.3	81	13.0	56	9.0	49	7.9	4	0.6	624
Winchester City	129	24.0	192	35.8	51	9.5	94	17.5	47	8.8	24	4.5	--	0.0	537
Region	1,082	19.7	1,881	34.2	441	8.0	599	10.9	429	7.8	363	6.6	24	0.4	4,819
Total	1,212	22.1	2,123	38.7	522	9.5	699	12.8	503	9.2	407	7.4	26	0.5	5,492

Source: VCCS AKT Report Table 11C, 2006.

Student Type

First-time students are those attending the College for the first time for credit, including dual enrolled students. Transfer students are those who have attended another college prior to attending LFCC for the first time, regardless of whether they transferred credit. Historically, the numbers of retained students at LFCC makes up 60 percent of the student body. The remaining 40 percent of students are classified as first time or transfer students.

Table 8. Headcount by Status

Term	First-Time		Returning		Transfer	
	N	%	N	%	N	%
Fall 2005	1,789	32.6	3,305	60.2	398	7.2
Fall 2004	1,791	33.1	3,205	59.2	420	7.8
Fall 2003	1,641	32.4	3,136	61.9	293	5.8
Fall 2002	1,573	30.8	3,119	61.1	409	8.0
Fall 2001	1,374	29.3	2,902	62.0	406	8.7

Source: VCCS SEB Report Table 3B, 2006

Dual Enrollment Program

Dual credit enrollment is the fastest growing subpopulation at LFCC. In the last five years, FTEs have jumped 159 percent, and the headcount has grown 128 percent. Over 20 percent of the student body is within this group. Continuing marketing efforts and expansions of the courses available through the program are expected to sustain this growth over the next few years.

Table 9. Dual Enrollment Headcount and Full-time Equivalent

Academic Year	Dual Credit* Student FTES	% of Annual FTES	Dual Credit Student Headcount	% of Annual Headcount
2005-06	552	17.8	1,600	20.8
2004-05	446	14.9	1,404	18.8
2003-04	339	11.6	1,108	15.7
2002-03	275	9.9	891	12.5
2001-02	213	8.6	703	10.5

*Classified as Curriculum 041, 042 and 043 students.

Distance Learning

Online classes have become a welcomed format for many students. More than 2,000 LFCC students took a distance learning course in 2005-06. As more online classes are added, it is expected that the percentage of students taking advantage of this flexible format will continue to increase.

Table 10. Distance Learning Headcount and Full-Time Equivalent

Academic Year	Total Students	Students in All DL Courses	Students in Both DL & Reg. Courses	Total Students in DL Courses	% DL Students	Annual FTES	Annual DL FTES	% DL FTES
2005-06	7,683	475	1,642	2,117	23.1	3,103	376	12.1
2004-05	7,461	412	1,605	2,017	27.0	3,005	343	11.4
2003-04	7,015	353	1,421	1,774	25.3	2,936	307	10.5
2002-03	7,069	15	80	95	1.3	2,801	14	0.5
2001-02	6,610	117	690	807	12.2	2,455	125	5.1

Program Placement

Programs offered by LFCC are classified by their purpose, whether they are to prepare students for transfer to four-year institutions or for specific occupational purposes. The transfer programs lead to an Associate in Arts and Sciences (AA&S) degree. The occupational preparation programs lead to an Associate of Applied Science (AAS) degree, a Certificate (C) or a Career Studies Certificate (CSC). The majority of students continue to be program-placed, with 59 percent in the transfer and occupational-technical programs.

Table 11. Headcount by Program Area

Status	Transfer		Occupational-Technical		Unclassified	
	N	%	N	%	N	%
Fall 2005	2,138	38.9	1,127	20.5	2,227	40.5
Fall 2004	1,975	36.5	1,131	20.9	2,310	42.7
Fall 2003	1,747	34.5	1,117	22.0	2,206	43.5
Fall 2002	1,557	30.5	1,010	19.8	2,534	49.7
Fall 2001	1,406	30.0	859	18.3	2,417	51.6

Source: VCCS SEB Report Table 4, 2006.

Table 12. Headcount of First Time Students

Status	Transfer		Occupational-Technical		Unclassified		Total
	N	%	N	%	N	%	N
Fall 2005	483	27.0	204	11.4	1,102	61.6	1,789
Fall 2004	514	28.7	200	11.1	1,077	60.1	1,791
Fall 2003	507	30.9	151	9.2	983	59.9	1,641
Fall 2002	405	25.7	153	9.7	1,015	64.5	1,573
Fall 2001	405	29.7	105	7.6	864	62.9	1,374

Source: VCCS SEB Report Table 3QQ, 2006.

Of the unclassified students, more than half are high school students in the dual enrolled program, and nearly 30 percent are interested in career development.

Table 13. Educational Objectives of Unclassified Students

	Fall 2001	Fall 2002	Fall 2003	Fall 2004	Fall 2005
Upgrade Employment Skills	388	355	250	249	169
Develop Job Skills	101	115	60	51	38
Career Exploration	736	729	455	371	293
General Knowledge	372	351	233	200	117
Transient Student	88	81	90	89	82
Non-Degree Transfer	33	23	55	91	106
H.S. Student	699	880	1,063	1,254	1,412
Current Requirements Pending	0	0	0	5	10
Total	2,417	2,534	2,206	2,310	2,227

Source: VCCS SEB Report Table 3F, 2006.

Full/Part-Time

Headcount enrollment at LFCC is nearly 72 percent part-time students and 28 percent full-time students. This ratio has not changed significantly within the last five years.

Table 14. Headcount and Full-Time Equivalent by Full-Time/Part-Time

	Full-Time				Part-Time			
	HC	%	FTES	%	HC	%	FTES	%
Fall 2005	1,535	27.9	1,413	25.7	3,957	72.1	1,464	26.7
Fall 2004	1,471	27.2	1,362	48.5	3,945	72.8	1,444	51.5
Fall 2003	1,480	29.2	1,396	51.2	3,590	70.8	1,333	48.8
Fall 2002	1,407	27.6	1,322	50.1	3,694	72.4	1,319	49.9
Fall 2001	1,203	25.7	1,127	50.2	3,479	74.3	1,187	51.3

Source: VCCS SEB Report Table 3TTT, 2006.

Day/Night Status

To be classified as a night student, a student needs to only attend one evening course. Less than one out of seven students is classified as a night student. Five years ago, one out of four students was an evening student. With the development and continuing expansion of online courses, there has been a steady decline in evening class enrollment.

Table 15. Daytime vs. Evening Class Enrollment

	Fall 2000		Fall 2001		Fall 2002		Fall 2003		Fall 2004		Fall 2005	
	N	%	N	%	N	%	N	%	N	%	N	%
Day	3,287	74.7	3,502	74.8	4,108	80.5	4,264	84.1	4,574	84.5	4,748	86.5
Evening	1,111	25.3	1,180	25.2	993	19.5	806	15.9	842	15.5	744	13.5

Source: VCCS SEB Report Table 15, 2006.

Developmental Courses Enrollment

The percentage of students taking at least one development course has remained relatively consistent for the last five years. Students are more likely to be assessed into developmental math than developmental English, though nearly two percent of LFCC students take both.

Figure 5. Students Enrolled in Development Courses

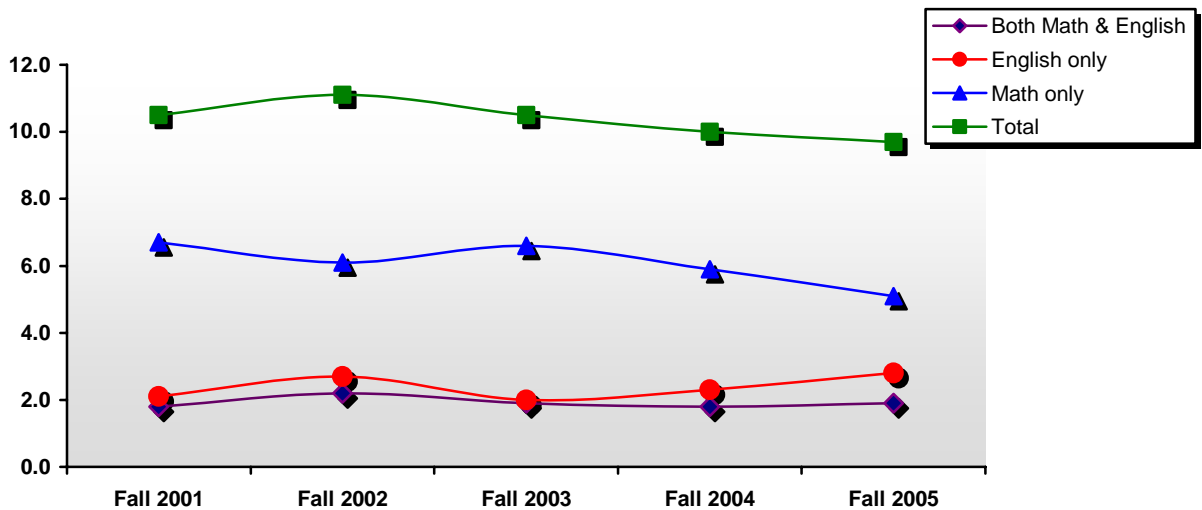


Table 16. Students Enrolled in Developmental Courses

Academic Year	Students Taking							
	Both		English		Math		None	
	N	%	N	%	N	%	N	%
Fall 2005	103	1.9	152	2.8	279	5.1	4,958	90.3
Fall 2004	100	1.8	122	2.3	322	5.9	4,872	90.0
Fall 2003	95	1.9	103	2.0	335	6.6	4,537	89.5
Fall 2002	100	2.2	122	2.7	275	6.1	3,988	88.9
Fall 2001	74	1.8	88	2.1	279	6.7	3,750	89.5

STUDENT ENROLLMENT BY DISCIPLINE

Table 17. Distribution of Program Placed Students by Curriculum and Award Type

Curriculum	Major	2001-02	2002-03	2003-04	2004-05	2005-06
AWARD: A.A.&S.						
216	Business Administration	248	256	289	368	415
624	Education	348	354	371	404	421
697	General Studies	614	721	863	1,086	1,251
650	Liberal Arts	398	458	530	550	560
881	Science	199	208	223	264	272
	A.A.&S. Total	1,807	1,997	2,276	2,672	2,919
AWARD: A.A.S.						
203	Accounting	70	107	116	123	113
298	Administrative Support Technology	70	92	89	78	79
302	Agricultural Business	67	78	81	72	70
981	Electronics Technology	11	8	2	1	0
968	Gen. Engineering Tech	80	114	120	143	144
299	Information Systems Technology	311	251	220	187	172
212	Management	164	140	160	167	147
156	Nursing	95	164	183	175	198
294	Office Systems Technology	0	0	1	0	0
	A.A.S. Total	868	954	972	946	923
AWARD: Certificate						
221	Career Studies	124	126	208	257	300
727	Comp Aid Draft Design Tech	0	1	1	0	0
922	Drafting	4	0	2	0	0
115	Electronic Commerce	0	1	1	5	2
519	Fine Arts	0	3	8	16	22
350	Graphic Design Office Assistant	4	12	5	6	4
311	Landscape Management	10	0	4	7	2
261	Legal Assistant	0	0	2	18	26
285	Medical Office Clerk	0	0	6	32	56
286	Medical Transcriptionist	0	0	1	17	23
264	Office Systems Technology	8	32	32	18	13
157	Practical Nursing	69	113	161	144	129
159	Surgical Technology	15	21	18	20	2
523	Technical Writing	0	0	0	3	2
	Certificate Total	234	309	449	543	581
	Total Program Placed Students	2,911	3,260	3,697	4,161	4,423

Source: VCCS Review of Academic Programs, Spring 2005.

RETENTION RATES

The Virginia Community College System (VCCS) retention rate average for fall 2004 to spring 2005 is 64.0 percent. With a 71.5 percent retention rate, LFCC ranks first among the 23 community colleges in Virginia. In contrast, VCCS has an average first-time student retention rate of 69.7 percent, dropping LFCC to 17th in the system with a 66.2 percent retention rate.

Fall-to-spring retention at LFCC has had a substantial increase within the last three years. This is presumed to be due to the growth in the number of dual-enrolled high school students. Most of these students begin the program in the fall semester and continue into the spring semester.

Table 18. Fall-to-Spring Retention

Term to Term	Total Student Fall Headcount	Returned Spring Headcount	%	First-Time Fall Headcount	Returned Spring Headcount	%
Fall 2005 – Spring 2006	5,492	3,928	71.5	687	455	66.2
Fall 2004 – Spring 2005	5,416	3,684	68.0	706	474	67.1
Fall 2003 – Spring 2004	5,070	3,467	68.4	658	472	71.7
Fall 2002 – Spring 2003	5,101	2,834	55.6	551	387	70.2
Fall 2001 – Spring 2002	4,682	2,607	55.7	498	355	71.3
Five Year Total	25,761	16,574	64.6	3,100	2,143	69.1

Source: VCCS Student Retention Report, 2006.

The fall-to-fall retention rate for the VCCS is 39.9 percent, making LFCC about average compared to its statewide peers. On the other hand, the VCCS fall-to-fall retention rate for first-time students is 50.7 percent, while LFCC retains 46 percent, a well-below average rate.

Table 19. Fall-to-Fall Retention

Term to Term	Total Student Fall Headcount	Returned Fall Headcount	%	First-Time Fall Headcount	Returned Fall Headcount	%
Fall 2005– Fall 2006	5,492	*		687	*	
Fall 2004 – Fall 2005	5,416	2,134	39.4	706	326	46.2
Fall 2003 – Fall 2004	5,070	2,018	39.8	658	360	54.7
Fall 2002 – Fall 2003	5,101	1,709	33.5	551	263	47.7
Fall 2001 – Fall 2002	4,682	1,628	34.8	498	278	55.8
Fall 2000 – Fall 2001	4,398	1,558	35.4	476	245	51.5

Source: VCCS Student Retention Report, 2006.

GRADUATES

ANNUAL NUMBER OF GRADUATES

Table 20. Graduate Awards

Year	Total Graduates	College Transfer	Occupational-Technical Degree	Certificate	Total Awards
2005-06	577	298	158	150	606
2004-05	586	283	175	181	639
2003-04	572	230	188	192	610
2002-03	530	227	145	189	561
2001-02	453	184	138	161	483

Over 600 awards were given to 577 graduates in 2005-06. While the overall numbers has decreased from the previous year, the number of transfer degrees increased and has continued to grow over the last five years. This corresponds with enrollment growth of transfer curriculums and is most likely due to the expansion and strengthening of LFCC's articulation agreements with baccalaureate institutions. In fall 2005, 266 LFCC graduates were enrolled in state at four-year colleges or universities. The previous fall, the number was 206.

Table 21. Distribution of Awards by Curriculum

Curriculum	Major	2001-02	2002-03	2003-04	2004-05	2005-06
AWARD: A.A.&S.						
216	Business Administration	42	35	44	43	41
624	Education	29	51	36	56	52
697	General Studies	56	45	34	60	80
650	Liberal Arts	46	74	85	99	92
881	Science	11	22	31	25	33
	A.A.&S. Total	184	227	230	283	298
AWARD: A.A.S.						
203	Accounting	8	10	15	17	12
298	Administrative Support Technology	12	11	17	16	6
302	Agricultural Business	7	7	13	10	11
981	Electronics Technology	3	4	1	0	0
968	Gen. Engineering Tech	9	13	11	15	9
299	Information Systems Technology	55	32	38	32	21
212	Management	13	14	17	25	16
156	Nursing	31	54	76	60	83
	A.A.S. Total	138	145	188	175	158
AWARD: Certificate						
221	Career Studies	120	135	102	97	96
115	Electronic Commerce	0	0	1	1	0
519	Fine Arts	0	0	2	0	0
350	Graphic Design Office Assistant	3	4	3	1	0
311	Landscape Management	0	0	2	2	1
261	Legal Assistant	0	0	0	2	4
285	Medical Office Clerk	0	0	3	3	2
286	Medical Transcriptionist	0	0	0	3	2
264	Office Systems Technology	3	14	20	12	4
157	Practical Nursing	28	28	53	52	41
159	Surgical Technology	7	7	6	8	0
	Certificate Total	161	188	192	181	150
	Total Awards by Program	483	560	610	639	606

Source: VCCS, Report GRD610.

A large percentage of LFCC students continue on with their education. Twenty-five percent of all LFCC's graduates transfer to four-year institutions within Virginia. Of graduates earning an Associate in Arts and Sciences Degree (AA&S), more than half transfer to another Virginia college or university.

Table 22. Transfer Rate for Transferring in Virginia

Graduation Year	All Graduates	AA&S Degree Programs
2004-05	25.3%	51.1%
2003-04	24.0%	53.5%
2002-03	24.3%	48.5%
2001-02	21.9%	46.2%
2000-01	25.2%	48.9%

Source: VCCS GRD Report, 2005.

**WORKFORCE
SOLUTIONS AND
CONTINUING
EDUCATION**

The College offers a variety of credit and non-credit courses. Credit, non-credit courses and special programs for personal and workforce development are offered through LFCC's Office of Workforce Solutions and Continuing Education. In addition to public offerings, customized training and professional programs for business and industry are offered.

Workforce programs are offered diverse in subjects and help students to build knowledge and training for occupational success in the workplace as well as continue general education interests. These programs include:

- Apprenticeship course work
- Business and industry educational partnerships
- Credit certificate programs
- Non-credit vocational offerings; pharmacy tech, security, plumbing, computer training, leadership, building trades, servsafe, OSHA, Autocad, optician and online programs
- WorkKeys
- Workshops, seminars, cultural events, public lectures, forums, conferences, institutes and meetings
- Command Spanish

The Office of Workforce Solutions and Continuing Education, through its coordinators of business and industry training and Small Business Development Centers, were able to reach thousands of students in the community in 2005-06.

Table 23. Workforce Solutions and Continuing Education Programs

Programs	2005-06	2004-05	2003-04	2002-03	2001-02
Custom Training					
Students Served	3,679	3,801	3,247	1,421	1,679
Classes Offered	122	143	102	139	228
Companies Served	55	62	36	33	34
Open Enrollment					
Credit Enrollment	1,103	1,115	1,172	1,102	*
Credit Classes Offered	90	82	79	75	*
Non-credit Enrollment	4,076	4,351	2,905	3,084	905
Non-credit Classes Offered	430	747**	308	295	236
Companies Paying Tuition	446	336	293	164	51
Certifications Awarded	419	523	422	303	55
Web-based Training					
Students Served	247	310	147	134	377
Classes Offered	223	279	99	87	234
Apprenticeships					
Active Apprentices	260	190	266	410	337
Apprenticeship Completers	33	23	35	22	21
Sponsors	31	49	42	44	32

*Information not available

**Includes web-based offerings

STUDENT RESOURCES

FINANCIAL AID

Financial assistance is available to students through a variety of federal, state and institutional programs. The following tables illustrate the amounts awarded, the number of students who received aid and what type of aid was given.

Table 24. Financial Aid Summary

Academic Year	Total Aid	# of Students who Received Aid	Avg. Per Student with Aid	Pct +/- Over Previous Year
2005-06	\$2,450,009	1,191	\$2,057.10	2.2%
2004-05	\$2,397,278	1,125	\$2,130.91	0.0%
2003-04	\$2,164,482	1,016	\$2,130.96	8.5%
2002-03	\$1,964,198	1,000	\$1,964.20	4.6%
2001-02	\$1,721,605	917	\$1,877.43	10.8%

Source: LFCC Office of Financial Aid.

Table 25. Financial Aid Headcount and Full-Time Equivalent Summary

Academic Year	Annual Headcount	Students Who Received Aid	Percent with Financial Aid
2005-06	7,683	1,191	15.5%
2004-05	7,461	1,125	15.1%
2003-04	7,015	1,016	14.5%
2002-03	7,069	1,000	14.1%
2001-02	6,610	917	13.9%

Source: LFCC Office of Financial Aid.

Table 26. Breakdown of Financial Aid Awards

	2001-02	2002-03	2003-04	2004-05	2005-06
Federal Pell Grant	\$1,146,538	\$1,381,716	\$1,528,384	\$1,616,450	\$1,570,474
Federal Supplemental Opportunity Grant	38,639	34,518	37,700	31,111	39,746
Federal Work-Study Program	50,934	51,834	68,345	86,048	84,859
Commonwealth Award	209,404	216,209	196,620	270,561	305,959
Virginia Guaranteed Assistance Program	9,800	9,800	22,500	20,800	27,300
Part-Time Tuition Assistance Program	15,206	22,137	23,576	42,630	42,630
Higher Education Teacher Assistance Program	4,000	0	2,000	6,000	6,000
College Scholarship Assistance Program	34,721	34,707	29,104	34,951	44,966
College Board Scholarships	45,947	41,082	63,642	74,724	96,664
Foundation	65,642	69,611	57,917	78,788	96,038
External Scholarships	100,774	102,584	124,694	135,216	135,373
Total Awards	\$1,721,605	\$1,964,198	\$2,164,482	\$2,397,278	\$2,450,009

Source: LFCC Office of Financial Aid.

TRIO GRANT

The TRIO Student Support Service Program is an opportunity for students to receive personal and academic support that will promote success in their pursuit of higher education. Individual student support is offered in the areas of:

- Counseling and advising
- Peer mentoring and tutoring student skills
- Transfer assistance
- Cultural/social activities
- Disability services
- Computer training

LFCC students may apply for the TRIO program if they meet one or more of the following criteria:

- A student whose parent(s) did not graduate from a four-year institution.
- A student who qualifies for financial aid or meets specific income guidelines.
- A student who has a physical, mental or learning disability who requires academic assistance.

TRIO served 229 students in 2005-2006.

LIBRARIES AND LEARNING RESOURCES

The Learning Resources Center at the Middletown Campus houses the Paul Wolk Library, the Jesse and Rose Loeb Learning Assistance Center and Warren B. French, Jr.

Telecommunications Center. The Bob G. Sowder Library is located on the Fauquier Campus.

Both libraries are open to the public without charge. Combined, the collection consists of:

- 61,800 volumes
- 28,000 online texts
- 265 print periodical subscriptions, with over 8,000 available online
- 200 databases, with millions of full-text articles available
- Video recordings, DVDs and compact discs

The libraries are fully computerized and provide Internet access. Through interlibrary loan, materials can be obtained from libraries around the world.

PERSONNEL

INSTRUCTIONAL FACULTY

Table 27. 9-Month Faculty

	2004-2005		2005-2006	
HEADCOUNT	56	%	57	%
Gender				
Male	31	55.4	29	55.4
Female	25	44.6	28	44.6
Race				
White	55	98.2	56	98.2
Black	1	0.8	1	1.8
Rank				
Instructor	9	16.1	8	14.0
Asst. Professor	23	41.1	23	40.4
Assoc. Professor	21	37.5	18	31.6
Professor	3	5.4	8	14.0

ADMINISTRATION AND STAFF

Table 28. Administration

	2004-2005		2005-2006	
HEADCOUNT	26	%	30	%
Campus				
Middletown	23	88.5	27	90.0
Fauquier	3	11.5	3	10.0
Gender				
Male	9	34.6	7	23.3
Female	17	65.4	23	76.7
Race				
White	23	88.0	29	96.7
Black	1	0.4	1	3.3
Hispanic	1	0.4	0	0.0
Other	1	0.4	0	0.0

Table 29. Classified Staff

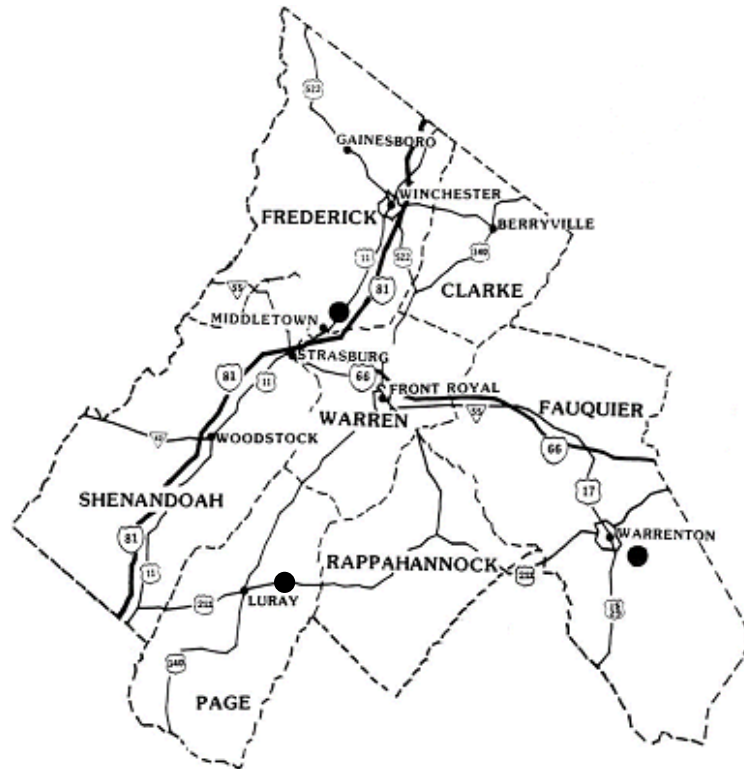
	2004-2005		2005-2006	
HEADCOUNT	78	%	74	%
Campus				
Middletown	66	84.6	62	83.8
Fauquier	12	15.4	12	16.2
Gender				
Male	34	43.6	26	35.1
Female	44	56.4	48	64.9
Race				
White	75	96.2	71	95.9
Black	2	2.6	1	1.4
Hispanic	0	0.0	0	0.0
Other	0	0.0	2	2.7

SERVICE REGION

THE SERVICE REGION

The service area for LFCC covers the geographic jurisdiction of Clarke, Fauquier, Frederick, Page, Rappahannock, Shenandoah and Warren counties and the City of Winchester. This includes a 2,555-square-mile region with a 2005 estimated population of 274,571.

Figure 6. Map of Service Region



Because of the proximity to the nation's capital, the natural environment, its cultural and historical setting and quality of life in the Northern Shenandoah Valley, the LFCC service region's population continues to grow. From 1970 to 2000, the service area's population increased 79.3 percent, a growth rate well above Virginia's 52.3 percent.

The population growth rate in the service area is expected to continue outpacing the state's rate. From 2000 to 2010, the growth rate is projected to be 16.2 percent versus the state's rate of 11.5 percent.

Table 30. Service Region Population Change

Locality	Historical				Estimated	Projected	Rate of Change	
	1970	1980	1990	2000	2005	2010	2000-05	2005-10
Clarke	8,102	9,836	12,101	12,652	13,900	14,200	9.9%	2.2%
Fauquier	26,375	35,762	48,741	55,139	62,900	68,200	1.2%	8.4%
Frederick	28,893	33,934	45,723	59,209	67,600	72,300	1.4%	7.0%
Page	16,581	19,168	21,690	23,177	24,000	24,000	3.6%	3.6%
Rappahannock	5,199	6,028	6,622	6,983	7,271	7,300	4.0%	4.1%
Shenandoah	22,852	27,475	31,636	35,075	38,900	39,100	10.9%	0.5%
Warren	15,301	21,035	26,142	31,584	34,300	36,300	8.6%	5.8%
Winchester	14,643	20,217	21,947	23,585	25,700	26,000	9.0%	1.2%
Total Service Region	137,946	173,455	214,602	247,404	274,571	287,400	11.0%	4.7%
Virginia	4,648,494	5,346,797	6,189,317	7,079,030	7,567,465	7,892,900	6.9%	4.3%

Source: Virginia Population Projections 2010, Virginia Employment Commission, 2003.

As an overview of LFCC's service region, the following table contains social and economic data for the localities.

Table 31. Service Region Overview

POPULATION (Area and Density)	Clarke	Fauquier	Frederick	Page	Rappahannock	Shenandoah	Warren	Winchester
Area (square miles)	177	650	415	311	267	512	214	9
Population (2005 Provisional Estimate)	13,900	62,900	67,600	24,000	7,271	38,900	34,300	25,700
Population Density per Square Mile	78	98	163	77	27	76	160	2,856
Total area: 2,555 square miles. Total population: 274,571. Total population density: 106.								
Source: 2005 Provisional Population Estimates, Weldon Cooper Center for Public Services, University of Virginia, 2006.								
DEMOGRAPHICS	Clarke	Fauquier	Frederick	Page	Rappahannock	Shenandoah	Warren	Winchester
% under 5 years old	5.2%	6.4%	6.5%	5.5%	5.1%	5.6%	6.6%	6.1%
% under 18 years old	23.4%	26.8%	26.4%	23.0%	22.3%	22.3%	25.6%	21.7%
% 19 to 64 years of age	62.0%	62.7%	63.0%	61.3%	63.9%	60.4%	62.1%	63.8%
% 65 years and over	14.6%	10.5%	10.6%	15.7%	13.8%	17.3%	12.3%	14.5%
Median age (years)	40.6	37.8	36.7	39.0	42.6	40.9	37.1	35.2
Male	49.5%	49.4%	50.0%	49.0%	49.7%	48.7%	49.2%	48.5%
Female	50.5%	50.6%	50.0%	51.0%	50.3%	51.3%	50.8%	51.5%
White	91.1%	88.4%	95.0%	96.3%	92.6%	95.6%	92.7%	82.1%
Black or African American	6.7%	8.8%	2.6%	2.2%	5.4%	1.2%	4.8%	10.5%
Hispanic	1.5%	2.0%	1.7%	1.1%	1.3%	3.4%	1.6%	6.5%
American Indian	0.2%	0.3%	0.2%	0.1%	0.2%	0.2%	0.3%	0.2%
Asian	0.5%	0.6%	0.7%	0.2%	0.2%	0.3%	0.4%	1.6%
Language other than English spoken at home	3.4%	5.2%	4.5%	2.9%	3.0%	4.9%	3.5%	10.0%

EDUCATION FOR PERSONS +25	Clarke	Fauquier	Frederick	Page	Rappahannock	Shenandoah	Warren	Winchester
% w/ Less than 9 th grade education	7.3%	6.2%	7.8%	16.3%	11.2%	9.9%	10.1%	10.1%
% w/ 9-12 education w/ no diploma	10.7%	9.3%	13.6%	18.9%	12.7%	14.8%	14.4%	14.6%
% of High school graduates	82.1%	84.5%	78.6%	64.8%	76.0%	75.3%	75.5%	75.4%
% w/ Associate degrees	4.6%	5.6%	5.2%	2.3%	4.6%	4.7%	4.8%	4.9%
% w/ Bachelor's degree or higher	23.9%	27.1%	18.6%	9.8%	22.9%	14.7%	15.0%	23.7%
EMPLOYMENT AND INCOME	Clarke	Fauquier	Frederick	Page	Rappahannock	Shenandoah	Warren	Winchester
Unemployment rate (2004)*	2.7%	2.6%	2.8%	5.1%	2.5%	3.0%	3.2%	3.2%
Median household income	\$51,601	\$61,999	\$46,941	\$33,359	\$45,943	\$39,173	\$42,422	\$34,335
Per capita income	\$24,844	\$28,757	\$21,080	\$16,321	\$23,863	\$19,755	\$19,841	\$20,500
POVERTY	Clarke	Fauquier	Frederick	Page	Rappahannock	Shenandoah	Warren	Winchester
% Persons below poverty	6.6%	5.4%	6.4%	12.5%	7.6%	8.2%	8.5%	13.2%
% Families below poverty	4.2%	3.7%	4.0%	10.1%	5.2%	5.8%	6.0%	8.1%
% w/ children under 18 yrs.	6.1%	4.6%	5.8%	14.2%	7.4%	10.9%	8.1%	12.5%
% w/ children under 5 yrs.	9.0%	6.9%	7.8%	17.3%	7.7%	11.6%	7.5%	17.9%

Source: U.S. Bureau of the Census, 2000 Census, unless otherwise noted. *Bureau of Labor Statistics, 2004.

Table 32. Virginia College Enrollment of LFCC Area Residents (Fall 2005)

Institution	Clarke County		Fauquier County		Frederick County		Page County		Rappahannock County		Shenandoah County		Warren County		City of Winchester		Total Enlmnt	
	N	%	N	%	N	%	N	%	N	%	N	%	N	%	N	%	N	%
LFCC	311	47	837	32	1,449	56	216	33	94	32	751	53	624	55	537	41	4,819	87.7
George Mason	23	3	356	14	116	5	9	1	40	14	41	3	84	7	69	5	738	2.5
James Madison University	32	5	144	6	175	7	57	9	29	10	142	10	49	4	102	8	730	4.3
Shenandoah University	38	6	27	1	225	9	7	1	3	1	40	3	54	5	258	20	652	21.7
Virginia Tech.	32	5	174	7	114	4	50	8	18	6	66	5	33	3	93	7	580	2.1
No. Va. CC	82	12	334	13	39	2	8	1	18	6	17	1	42	4	21	2	561	1.5
University of Virginia	21	3	124	5	40	2	16	2	21	7	40	3	21	2	37	3	320	1.3
Old Dominion University	14	2	77	3	79	3	12	2	9	3	35	2	30	3	27	2	283	1.3
Blue Ridge CC	3	0	12	0	13	1	155	24	2	1	76	5	3	0	1	0	265	7.0
Radford University	11	2	51	2	82	3	12	2	6	2	39	3	26	2	33	3	260	2.7
Univ. of Mary Washington	12	2	91	3	19	1	2	0	6	2	9	1	12	1	13	1	164	3.7
Va. Commonwealth	15	2	29	2	29	1	6	1	6	2	13	1	25	2			140	0.5
Longwood University	9	1	14	2	14	1	3	0	5	2	9	1	6	1	8	1	111	2.5
Coll of Wm and Mary	11	2	20	1	20	1	3	0	4	1	7	0	7	1	18	1	103	1.4
Christopher Newport	2	0	18	2	18	1	8	1	1	0	11	1	10	1	3	0	100	2.1
Other 4-yr institutions	28	4	282	5	102	4	73	11	23	8	95	7	96	8	58	4	604	
Other 2-yr institutions	14	2	22	3	38	1	9	1	11	4	17	1	12	1	16	1	188	
Total In-State	658	100	2,612	100	2,572	100	646	100	296	100	1,408	100	1,137	100	1,294	100	10,618	

Source: VCCS Colleges Attended by Residence in LFCC Service Region, 2006.

Nine out of 10 credit students enrolled at LFCC live within our service region.

The participation rate equals the locality headcount divided by the locality population. The total service region participation rate fell from 1.81 in 2004 to 1.76 in 2005. While the estimated population for 2005 in the service region grew nearly 20%, enrollment from the same localities fell by over 1.0%. Enrollment from Fauquier and Page counties increased while enrollment of residents from the other localities dropped or were stagnant.

Table 33. LFCC Market Penetration of Service Region

Locality	2005 Population	Fall 2005 Credit Headcount	2005 Participation Rate	% of Fall 2005 Total Credit Headcount
Clarke County	13,900	311	2.24	5.7
Fauquier County	62,900	837	1.33	15.2
Frederick County	67,600	1,449	2.14	26.4
Page County	24,000	216	0.90	3.9
Rappahannock County	7,000	94	1.34	1.7
Shenandoah County	38,900	751	1.37	13.7
Warren County	34,300	624	1.82	11.4
Winchester City	25,700	537	2.09	9.8
Region	273,300	4,819	1.76	87.8

Population estimates are based on Weldon Cooper 2005 Provisional Estimates.
Credit headcount is fall 2005 end-of-term and is within service region only.

Table 34. Student Enrollment by In-State High Schools

In-State High School	Total	First Time
Central High School	263	105
Clarke County High School	281	107
Culpeper County High School	110	33
Fauquier High School	328	135
GED	227	61
Home School	173	65
James Wood High School	445	129
John Handley High School	328	101
Liberty High School	219	91
Millbrook High School	156	91
Page County High School	76	37
Sherando High School	401	150
Stonewall Jackson High School	155	70
Strasburg High School	202	52
Warren County High School	447	171
Other Schools	715	253
Total	4,526	1,651

Source: VCCS Report Table 19

Table 35. Enrollment Projections for Service Area

District	Year	K	1 st	2 nd	3 rd	4 th	5 th	6 th	7 th	8 th	9 th	10 th	11 th	12 th	Total
Clarke	2006-07	143	133	153	164	143	146	168	168	172	208	194	173	180	2,146
	2007-08	136	147	138	162	167	146	150	173	174	187	209	189	174	2,151
	2008-09	156	139	153	146	166	170	149	155	179	188	188	204	190	2,182
	2009-10	154	160	145	161	149	168	174	154	160	194	189	183	205	2,197
	2010-11	152	159	167	153	165	152	172	180	159	173	195	184	184	2,194
Fauquier	2006-07	825	833	864	849	844	826	803	867	808	935	923	826	856	11,056
	2007-08	852	864	862	884	884	873	858	838	863	889	872	845	878	11,261
	2008-09	840	892	894	882	921	914	906	895	834	950	828	798	899	11,454
	2009-10	869	880	924	916	919	953	949	945	891	917	885	758	849	11,655
	2010-11	872	911	911	945	953	951	989	990	941	980	855	810	807	11,915
Frederick	2006-07	789	999	931	947	929	935	972	963	1,046	1,240	990	905	844	12,489
	2007-08	933	834	1,025	974	993	978	980	990	997	1,238	1,076	873	936	12,828
	2008-09	973	986	885	1,073	1,022	1,046	1,025	998	1,026	1,180	1,074	948	903	13,110
	2009-10	1,046	1,028	1,011	896	1,126	1,076	1,096	1,044	1,034	1,213	1,023	947	981	13,522
	2010-11	1,005	1,105	1,055	1,059	940	1,185	1,128	1,116	1,081	1,224	1,052	902	979	13,832
Page	2006-07	286	280	282	262	265	252	298	288	323	303	286	252	233	3,610
	2007-08	297	293	282	279	266	266	255	305	302	340	282	251	235	3,653
	2008-09	290	304	296	280	284	267	269	260	319	318	316	247	234	3,684
	2009-10	288	297	307	293	285	285	270	275	273	336	295	277	230	3,711
	2010-11	298	295	300	304	298	285	288	276	288	287	312	259	258	3,749
Rappa-hannock	2006-07	67	68	69	66	79	64	70	57	83	85	86	78	91	965
	2007-08	65	68	70	70	68	77	67	70	58	87	83	85	83	948
	2008-09	54	67	70	70	71	66	80	67	70	60	84	81	89	929
	2009-10	67	55	68	70	72	69	69	80	67	73	58	82	85	916
	2010-11	63	68	56	68	71	70	72	69	80	70	71	57	87	903
Shenandoah	2006-07	504	447	452	454	452	478	490	562	478	553	503	475	417	6,263
	2007-08	452	515	456	468	471	467	511	502	576	631	499	481	462	6,391
	2008-09	499	463	525	472	486	487	499	524	514	640	479	477	468	6,533
	2009-10	507	511	471	544	490	502	521	512	536	572	577	458	464	6,665
	2010-11	496	519	520	488	565	507	537	534	524	596	516	522	446	6,800
Warren	2006-07	378	397	404	380	353	384	438	421	402	506	477	404	370	5,315
	2007-08	389	393	407	398	382	361	395	448	429	415	543	401	400	5,352
	2008-09	428	404	403	401	400	391	370	403	457	443	438	448	397	5,394
	2009-10	396	444	414	397	403	409	401	378	411	471	468	368	444	5,406
	2010-11	413	411	456	408	399	412	420	410	386	424	498	393	365	5,393
Winchester City	2006-07	325	280	281	390	266	300	276	275	291	369	335	291	246	3,825
	2007-08	303	317	281	271	291	262	300	291	277	356	323	305	280	3,856
	2008-09	346	296	319	272	272	285	262	317	293	339	311	294	293	3,897
	2009-10	359	338	298	308	272	267	285	276	319	358	286	283	282	3,942
	2010-11	343	351	340	288	309	267	267	300	278	390	313	270	272	3,987
Service Area	2006-07	2,938	3,039	3,031	3,031	2,978	3,002	3,077	3,180	3,201	3,693	3,318	3,000	2,866	40,354
	2007-08	3,426	3,431	3,521	3,507	3,522	3,428	3,516	3,616	3,676	3,676	4,042	3,877	3,448	46,440
	2008-09	3,587	3,550	3,515	3,596	3,622	3,626	3,561	3,618	3,692	3,692	4,117	3,718	3,498	47,173
	2009-10	3,687	3,714	3,637	3,585	3,716	3,729	3,766	3,663	3,691	3,691	4,135	3,793	3,541	48,014
	2010-11	3,641	3,819	3,806	3,713	3,700	3,829	3,874	3,875	3,737	3,737	4,144	3,812	3,397	48,773

Source: Weldon Cooper Center for Public Service, 2005.

DEFINITIONS

A.A.

Associate in Arts Degree

A.A.S.

Associate in Applied Science Degree

A.A.&S.

Associate in Arts and Science Degree

A.S.

Associate in Science Degree

Academic Year

Always begins with the summer semester. A semester system academic year is composed of summer, fall and spring semesters.

Admitted student

Applicant who is offered admission to a degree-granting program at an institution

Annual unduplicated headcount

The number of different students that the college/campus has served in an academic year (i.e. if a student enrolled in both fall and spring, they could be counted only once)

Annualized full-time equivalent students (FTES)

In a semester system, the sum of three semesters (summer, fall and spring) FTES divided by two or the sum of total credit hours divided by 30 credit hours

Campus

The course campus of a student; it reflects where the student actually takes courses

Census date

The date when the number of students enrolled in each class and section is counted. For semesters, the census date shall be no sooner than the end of the 14th calendar day from the beginning of the semester.

Certificate

A formal award certifying the satisfactory completion of a post-secondary education program

College transfer student

A student enrolled in an A.A. or A.S. degree program

Continuing education units (CEUs)

A statistic that represents 10 contact hours of participation in an organized educational experience under responsible sponsorship, capable direction and qualified instruction. A decimal fraction of a unit may be awarded for an offering of shorter duration.

Contract student

A student enrolled through a special arrangement contract

Credit hour

A unit of measure representing an hour (50 minutes) of instruction over a semester. It is applied toward the total number of hours needed for completing the requirements of a degree, diploma, certificate or other formal award.

Curricular student

A student enrolled in an A.A., A.S., A.A.&S., diploma or certificate program.

Day student

A student who takes at least one course that begins prior to 6 p.m.

Dual enrollment

A program through which high school students may enroll in college courses while still enrolled in high school. Students are not required to apply for admission to the College in order to participate.

Dual-enrolled student

A student who has not graduated from high school, is currently enrolled in high school and is also enrolled in a post-secondary institution.

Distance learning

An option for earning course credit at off-campus locations via cable television, Internet, satellite classes, videotapes, correspondence courses or other means.

End of term FTES

The FTEs which are reported to the State Council of Higher Education for Virginia (SCHEV) and used in the budgeting process in a semester that has two census dates.

English as a second language (ESL)

A course of study designed specifically for students whose native language is not English.

Evening student

A student who takes only courses that begin after 6 p.m.

First-time enrolled

Enrolled in the institution for the first time for the reporting semester

First-time, first-year student

A student attending any institution for the first time at the undergraduate level. Includes students enrolled in the fall semester who attended college for the first time in the prior summer semester. Also includes students who entered with advanced standing (college credits earned before graduation from high school).

FTES

Full-time equivalent student; used to determine overall budget for the College. Fifteen student credit hours

Full-time student

A student who takes 12 or more credit hours in one semester

Headcount

Reported credit student enrollment which excludes audits, late adds and non-credit students

IPEDS

Integrated Post-secondary Education Data System. A postsecondary data collection system for the National Center for Education Statistics (NCES)

Mid-term headcount

The student headcount that is reported to SCHEV in a term that has two census dates

NCES

National Center for Education Statistics. The primary federal entity for collecting and analyzing data that are related to education in the United States and other nations

New student

A student who has never attended an institution of higher education

Non-credit course

A course of activity having no credit applicable toward a degree, diploma or certificate

Non-curricular student

A student enrolled in a non-credit capacity; enrolled in courses that are not in an A.A., A.S., A.A.&S. diploma or certificate program.

Occupational/technical student

A student enrolled in an A.A.S. degree, certificate or diploma program that prepares the student for immediate employment.

Off-campus student

A student who takes all of their courses at off-campus locations

On-campus student

A student who takes at least one course at an on-campus location

Open admission

Admission policy under which virtually all secondary school graduates or students with general education degree (GED) equivalency diplomas are admitted without regard to academic record, test scores or other qualifications

Part-time student

A student who takes less than 12 credit hours in one term

Returning student

A student who has attended the College on a previous occasion

SCHEV

State Council for Higher Education in Virginia; the state's coordinating body for higher education

Transfer student

A student who has attended or is attending another institution of higher education

Unclassified student

See "non-curricula student"

VCCS

Virginia Community College System. Includes the 23 community colleges throughout the state