

# FACT BOOK

## 1999-2000

30th Anniversary Edition



# LORD FAIRFAX COMMUNITY COLLEGE

*Published June 2000*

*Office of Planning and Research*

**Fauquier Campus**  
6480 College Street  
Warrenton, Virginia

**Middletown Campus**  
173 Skirmisher Lane  
Middletown, Virginia

## FOREWORD

The 1999-2000 Lord Fairfax Community College Fact Book (*presented August 2000*) is not an attempt to provide a complete picture of all that happens at LFCC, or all that is important in the communities and lives of persons served by the College. This Fact Book serves as a “snapshot” of the College and the students and communities it serves.

Information contained in this Fact Book is open to all persons interested in the College. The intended audience of this document is the administration, faculty, staff, students, the Foundation and College Boards, and other parties with a vested interest in the College and the citizens of the region. It is hoped that readers will see more than a book of tables and charts, because these numbers represent individuals. Too frequently service organizations see such great need when reviewing statistics of their region that they fail to consider that the “numbers” are served one at a time.

Readers may also want to visit the Office of Planning and Research’s website at the following URL: [http://www.lf.cc.va.us/lfjamit/OPR\\_Home.htm](http://www.lf.cc.va.us/lfjamit/OPR_Home.htm) for other planning and research documents and links to College and service area information.

The Director of Planning and Research attempts to produce a document that is important as well as statistically and aesthetically sound. The Director also wishes to improve publications by encouraging feedback from readers. Please call 540-868-7168, send E-mail to [lfjamit@lf.cc.va.us](mailto:lfjamit@lf.cc.va.us), or stop by the office to share ideas about improving the Fact Book.

## FAST FACTS FOR 1999-2000

[Return to Table of Contents](#)

- The College's annual budget, including restricted and unrestricted funds, was approximately \$10.2 million.
- The College received \$788,228 in grants.
- The Lord Fairfax Community College Educational Foundation, Inc. received 929 gifts, cultivated 261 new donors and raised \$4 million.
- The Foundation awarded 73 scholarships totaling \$62,561.
- The College had an annual unduplicated enrollment of 5,985 students.
- Overall annualized FTE grew by 11.2% between 1998-99 and 1999-2000 from 1,946 to 2,164.
- The College graduated 392 students in May 2000.
- The College transfer-out rate is 14.18%, while the VCCS rate is 12.47%. *Source: 1999 IPEDS GRS-2, based on Fall 1996 Cohort.*
- The College graduation rate is 28.37%, while the VCCS graduation rate is 14.79%. *Source: 1999 IPEDS GRS-2, based on Fall 1996 Cohort.*
- 77.1 percent of students who enrolled in credit courses during Fall 1999 returned for Spring 2000. *Source: Student Enrollment Books, Table 15.*
- Since fall 1998, dual enrollment (unduplicated) has increased by 106% from 267 to 484 students.
- The number of courses delivered through distance learning increased 23%, while the number of courses offered by distance learning increased by 37%.
- The number of employers served by the registered apprenticeship program increased from 27 to 41 (51.8%), while the number of apprentices served was 132.
- In 1999-00, 19 jobs were profiled using Work Keys and over 4,500 Work Keys assessments were completed.
- The Small Business Development Center was instrumental in creating 66 new jobs (32 in 1998-99) and saving 77 jobs (10 in 1998-99).
- The Small Business Development Center helped produce \$1,218,500 in new capital investments and increased business sales by \$9,329,797 in 1999-00.
- The College is entering the third year of a U.S. Department of Education Title III Grant totaling nearly \$350,000 for each of five years.
- Forty-four percent of LFCC's full-time employees are over 50 years of age.

# TABLE OF CONTENTS

Foreword .....	2
Fast Facts.....	3
List of Tables .....	6
List of Figures.....	7
<b>THE COLLEGE .....</b>	<b>8</b>
General Information.....	9
College Vision Statement.....	10
College Mission Statement.....	10
Long-Range Institutional Goals.....	11
Campus Locations and Facilities .....	13
Assignable Square Feet (ASF) by Function .....	15
LFCC Educational Foundation, Inc. ....	16
<b>THE SERVICE REGION.....</b>	<b>19</b>
General Information.....	20
Service Region Demographic and Economic Indicators.....	21
Fall Enrollment Projections by Grade, Public School Systems in the LFCC Service Region, 1997-1998 to 2001-2002 .....	23
<b>ENROLLMENT &amp; STUDENT DEMOGRAPHICS.....</b>	<b>24</b>
General Enrollment & Student Characteristics.....	25
Annual Full-time Equivalent (FTE) and Unduplicated Headcount,..... 1971-1972 through 1999-2000 .....	26
Annual FTE Trends, 1987-1988 through 1999-2000.....	27
Annual Unduplicated Headcount Trends, 1971-72 through 1999-2000.....	27
Full-time Equivalent Enrollment, Semester Trends, 1989-90 through 1999-2000.....	28
Unduplicated Headcount, Semester Trends, 1989-90 through 1999-2000 .....	29
Percent of Fall Enrollees Returning in Spring, 1987-88 through 1999-2000.....	30
Annual Retention.....	30
Fall to Spring Retention of First-time Students by Campus.....	31
Number of Graduates, 1985 to 2000.....	31
Graduate and Awards Comparison 1990 and 2000.....	32
Unduplicated Headcount by Age, Fall 1999.....	32
Unduplicated Headcount by Transfer, Technical and Unclassified, Fall 1999 .....	33
College-Bound Residents Enrolled, Fall 1997-Fall 1999 .....	34
Unduplicated Headcount by Race/Ethnicity, .....	34

Fall Semesters, 1973 to 1999	
In-District Student Headcount by Region, Fall Semesters, 1973 to 1999.....	35
Unduplicated Headcount by Gender, Fall 1999.....	36
Unduplicated Headcount by On/Off Campus, Fall 1999.....	36
Unduplicated Headcount by Day/Evening, Fall 1999.....	37
Headcount by Award: Degrees, Certificates and Unclassified Students, 1986 to 1999...	37
Arts and Sciences Enrollment by Curriculum, Fall 1999.....	38
Applied Science and Technology Enrollment by Curriculum, Fall 1999.....	38
Certificate Enrollment by Curriculum, Fall 1999.....	39
Educational Objectives of Unclassified Students, Fall 1999.....	39
Developmental Enrollment by Year of High School Graduation, 1990-1999.....	40
Dual Credit Enrollment by Semester, 1992-93 through 1999-2000.....	40
Financial Aid Awards (Pell Students and Dollars), .....	41
1987-88 through 1999-2000	
<b>PERSONNEL.....</b>	<b>42</b>
General Information.....	43
Staff Characteristics.....	43
Faculty Characteristics.....	43
Administrative Characteristics.....	44
Full-time Personnel by Category, Fall 2000.....	44
Full-time Personnel by Age, Fall 2000.....	45

## List of Tables

[Return to Table of Contents](#)

- Table 1. Assignable Square Feet (ASF) by Function
- Table 2. LFCC Service Region Demographic and Economic Indicators
- Table 3. Fall Enrollment Projections by Grade, Public School Systems in the LFCC Service Region, 1997-1998 to 2001-2002
- Table 4. Annual Full-time Equivalent (FTE) and Unduplicated Headcount, 1971-1972 through 1999-2000
- Table 5. Annual Retention Rate Comparison for FT and PT Students, 1997-98 and 1999-2000
- Table 6. Fall 1999 to Spring 2000 Retention of First-time Students by Campus
- Table 7. Graduate and Award Comparison, 1990-1999
- Table 8. Unduplicated Headcount by Race/Ethnicity, Fall Semesters 1973 to 1997
- Table 9. In-District Student Headcount by Region, Fall Semesters 1973 to 1997
- Table 10. Headcount by Award: Degrees, Certificates and Unclassified Students, Fall Semesters 1973 to 1997
- Table 11. Dual Enrollment Unduplicated Headcount, 1992-93 through 1999-2000
- Table 12. Financial Aid Awards (Pell Students and Dollars), 1987-88 through 1999-2000
- Table 13. Full-time Personnel by Category, Fall 2000
- Table 14. Full-time Personnel by Age, Fall 2000

# List of Figures

[Return to Table of Contents](#)

- Figure 1. Annual FTE Trends, 1971-72 through 1999-2000
- Figure 2. Annual Unduplicated Headcount Trends, 1971-72 through 1999-2000
- Figure 3. Full-time Equivalent Enrollment, Semester Trends, 1989-90 through 1999-2000
- Figure 4. Unduplicated Headcount, Semester Trends, 1989-90 through 1999-2000
- Figure 5. Percent of Fall Enrollees Returning in Spring, 1987-88 through 1999-2000
- Figure 6. Number of Graduates, May 1985 to May 2000
- Figure 7. Unduplicated Headcount by Age, Fall 1999
- Figure 8. Unduplicated Headcount by Transfer, Technical and Unclassified, Fall 1999
- Figure 9. Percent of College-Bound Residents Enrolled at Lord Fairfax Community College, Fall 1997 – Fall 1999
- Figure 10. Unduplicated Headcount by Gender, Fall 1999
- Figure 11. Unduplicated Headcount by On/Off Campus, Fall 1999
- Figure 12. Unduplicated Headcount by Day/Evening, Fall 1999
- Figure 13. Arts and Sciences Enrollment by Curriculum, Fall 1999
- Figure 14. Applied Science and Technology Enrollment by Curriculum, Fall 1999
- Figure 15. Certificate Enrollment by Curriculum, Fall 1999
- Figure 16. Educational Objectives of Unclassified Students, Fall 1999
- Figure 17. Percent of Students Taking Developmental Courses by Year of High School Graduation, 1990-1999

# **THE COLLEGE**

# THE COLLEGE

[Return to Table of Contents](#)

## GENERAL INFORMATION

Lord Fairfax Community College is a comprehensive, non-residential, two-year public community college located in northwest Virginia. The College has two campuses located in Middletown and near Warrenton, Virginia. The College operates as a part of the Virginia Community College System (VCCS). The State Board for Community Colleges is responsible for the administration of the VCCS. The Chancellor, as chief executive officer of the system, provides leadership for general statewide planning and coordination of the state's 23 community colleges. The chief administrative officer of the College is the President, who is responsible for the organization and operation of the College in accordance with the policies, procedures, and regulations of the State Board, the Virginia Community College System, and the local College Board. Lord Fairfax Community College is accredited by the Commission on Colleges of the Southern Association of Colleges and Schools to award the associate degree.

Lord Fairfax Community College (LFCC) was founded in 1970. Over the years the College has continued to grow and enhance the quality of life for area residents while increasing the availability of a trained work force. Approximately 66,000 students have enrolled in classes at the College since its inception. Lord Fairfax Community College is committed to meeting the needs of increasing numbers of nontraditional, older, part-time students seeking education and skills to access a critical job market. To be such a resource, Lord Fairfax Community College seeks to become self-sufficient, mitigating the poverty and negative economic and social forces impacting its service area.

Lord Fairfax Community College adheres to an open door admissions policy and offers over 70 different programs of study. Two-year degree programs, one-year certificate programs, and a variety of short-term career studies programs provide numerous educational opportunities for the citizens of the region.

## VISION STATEMENT

[Return to Table of Contents](#)

Lord Fairfax Community College will be a leader in higher education preeminently recognized for teaching excellence, student success, and responsiveness to internal and external communities and partnerships with business, government, schools, and colleges.

## MISSION STATEMENT

The mission of Lord Fairfax Community College is to provide comprehensive higher educational and workforce training programs and services of superior quality that are financially and geographically accessible and that meet individual, business, and community needs by:

- Providing programs and courses of instruction, through the associate-degree level, encompassing occupational-technical education, college transfer education, general education, developmental education, continuing education, and workforce development;
- Offering a comprehensive program of student-development services;
- Utilizing a broad range of technologies, methods, materials, and facilities, within instructional and support services that accommodate students of diverse backgrounds, interests, and abilities;
- Creating an educational environment that facilitates learning through a curriculum that broadens perspectives, leads to responsible citizenship, and sets standards that support the highest level of performance;
- Serving as the linkage between secondary education and four-year colleges and universities;
- Enriching local communities, by making available resources of people, facilities, libraries, and programming;
- Taking a leadership role in helping shape the future direction of its communities;
- Enhancing economic, cultural, and educational partnerships between the College and the communities it serves;
- Ensuring a healthy and safe environment on each campus; and
- Maintaining fiscal responsibility and accountability.

## LONG-RANGE INSTITUTIONAL GOALS

[Return to Table of Contents](#)

1. To provide a strong, comprehensive, instructional program which accommodates students with varying backgrounds, abilities, and interests and enables accomplishment of academic goals such as the associate degree, developmental education, self-enrichment, cultural objectives, or transfer to other colleges and universities.
2. To provide quality occupational/technical programs which prepare students for careers in technical, paraprofessional, and management positions.
3. To expand community services and continuing education programs for both adults and youth, cooperate with high school and community agencies in community education programs and promote the economic, educational, and cultural development of the service area.
4. To provide a comprehensive program of student services which meets the educational, personal, career and social needs of students and facilitates entry in to the College and promotes appropriate placement.
5. To assure and extend access to all students who can benefit, including minorities, persons with disabilities, and the disadvantaged, to educational programs presented in a variety of instructional modes, offered at convenient times and locations (off-campus centers), and supplemented by articulation with other service area agencies.
6. To provide a comprehensive learning resources program to support instructional, professional development and the life-long learning needs of faculty and staff, students and community residents.

7. To serve as a cultural and recreational center for the service area by offering a broad range of programs and services to enrich the life of the individual and the community and to enhance appreciation of creative expression in all forms including music, dance, theater arts, visual arts, and recreation.
8. To develop partnerships with business, industry, government, education, and other external agencies in order to meet the training and retraining needs of the work force.
9. To improve and expand financial resources (foundation, endowment, and grants) and campus facilities to the level that comprehensive educational, cultural, and recreational programs can be enhanced and a standard of excellence maintained.
10. To provide comprehensive faculty and staff development, which facilitates the provision of quality instructional, student, and administrative services programs to meet the needs of a diverse student body.
11. To increase the cultural diversity of our student body and employees by actively recruiting and retaining minority students and personnel.
12. To become a continuous quality improvement institution which conducts continuous institutional self-appraisal and renewal encompassing comprehensive planning, review, and evaluation in all aspects of College operations.

## **CAMPUS LOCATIONS AND FACILITIES**

[Return to Table of Contents](#)

### **FAUQUIER CAMPUS**

The Fauquier Campus of Lord Fairfax Community College offers high-quality, low-cost community college services to residents of Fauquier and neighboring counties. The campus is conveniently located on a 58-acre site, on U.S. Route 29, just south of Warrenton, Virginia.

In December 1988, Fauquier County businessman, Bob G. Sowder, donated 2.5 acres of property, with a building in need of renovation, to be used for the purpose of establishing a community college in Fauquier County. This property is now the Fauquier Campus of Lord Fairfax Community College.

In 1994, the Virginia General Assembly appropriated funds to begin preliminary planning for a full-service campus at the Fauquier location. In 1996, the General Assembly appropriated \$7.2 million for the construction of the Fauquier Campus of Lord Fairfax Community College. Construction on the 60,000 square foot project, started in November 1997, was completed in January 1999.

The Fauquier Campus offers a variety of credit and non-credit courses. The programs of study include Associate in Arts and Sciences degrees that prepare students for entry into four-year college or university programs after the sophomore year, and Associate in Applied Science degree programs that provide marketable skills in two years or less. Career Studies Certificate programs may be completed in one-year or less by students who wish to be more qualified for today's competitive job market. Non-credit courses and special programs for personal and workforce development are offered through the Fauquier Campus Continuing Education Division. In addition to public offerings, the campus offers customized training and professional programs for business and industry. The Fauquier Campus is committed to serving the life-long learning needs of the community.

### **MIDDLETOWN CAMPUS**

The Lord Fairfax Community College Middletown Campus is the main campus situated on a 120-acre tract in the northern region of the historic Shenandoah Valley approximately 10 miles south of Winchester, Virginia. The campus is nestled among the Blue Ridge, Massanutten, and Allegheny Mountains. Interstate Highways 66 and 81 and U.S. Route 11 are all nearby making the campus accessible.

The original college building includes classrooms, laboratories, administrative and faculty offices, a business office, the William M. Dietel Bookstore and the Kumkli Student Center. In 1985 a technology center was built on the Middletown Campus housing the Special Events Center, computer labs, classrooms and faculty offices. During the 1993 commencement exercises the building was officially named the Alson H. Smith, Jr. Technology Center. In 1994, the construction of the Learning Resources Center was completed and the facility was dedicated in April 1995 in honor of benefactor Paul Wolk of Fauquier County. Outside facilities include two Quonset style double polyfilm greenhouses, which provide laboratory space for the Horticulture program, and a regulation 400-meter Olympic size track and fitness trail. A mobile computer classroom provides an innovative source of delivery for instructional purposes.

### **LEARNING RESOURCES CENTER**

The Learning Resources Center at Middletown houses the Paul Wolk Library, the Jesse and Rose Loeb Learning Assistance Center, Warren B. French, Jr. Telecommunications Center and Audio-Visual Services. This facility is open to the public and the hours of operation vary according to the academic calendar.

The library collection of more than 50,000 titles is well chosen and designed to support the College curriculum as well as to provide for a wide range of interests. It includes books, films, filmstrips, audiocassettes, videotapes, CD-ROM's, computer programs and the William B. Remington Archive Room. Additionally, the library subscribes to approximately 300 magazines and newspapers. The library is fully computerized and provides access to the Internet and a wide variety of online databases. The library can obtain materials from libraries all over the world.

Audio-Visual Services provides support to faculty in the use of the most modern teaching methods and materials. The large variety of audiovisual equipment, including video cameras and recorders, is supplied for use in classrooms, on- and off-campus, and for production by faculty of their own teaching materials. Audio-Visual Services also supports the technical needs of the College's distances learning services.

## LEARNING ASSISTANCE CENTER

The Jesse and Rose Loeb Learning Assistance Center at Middletown is located in the library. Its goals are to help students improve study strategies and learning skills, and to become more effective in their studies so they may become more confident. The LAC supports classroom instruction by offering alternative learning opportunities such as computer-assisted instruction. In addition, the LAC offers special services in reading, math, writing, listening, and study skills. Students may work independently, with an Assistant, with a tutor or a study group or take advantage of assistive technologies.

[Return to Table of Contents](#)

**Table 1.**  
**Assignable Square Feet (ASF) by Function**

<b>Campus/ Function</b>	<b>ASF</b>
<b>Middletown Campus</b>	
Academic & Instructional Support	42,202
Student Services & Institutional Support	14,661
Library	12,724
Physical Plant	1,404
Total Educational and General	70,991
Auxiliary Enterprises	8,275
Middletown Total	79,266
<b>Fauquier Campus</b>	
Academic & Instructional Support	22,372
Student Services & Institutional Support	8,684
Library	8,500
Physical Plant	5,821
Total Educational and General	39,556
Auxiliary Enterprises	1,811
Fauquier Total	41,367
<b>College Total</b>	
	<b>120,633</b>

Source: FIA Inventory System

**THE LORD FAIRFAX COMMUNITY COLLEGE  
EDUCATIONAL FOUNDATION, INC.**

[Return to Table of Contents](#)

The Lord Fairfax Community College Educational Foundation, Inc. had an outstanding year generating support and resources for the college. Mrs. Dottie S. Whitt, Chairman of the Board, along with LFCC President Marilyn Beck and 41 community volunteers, led the development efforts raising nearly \$4 million from 929 gifts.

The college received the largest single gift in its 30-year history by Mrs. Shirley Corron of Warren County. Mrs. Corron's gift was designated toward the construction of the Community Cultural Center on the Middletown Campus that will bear the name of her late husband, the Honorable W. LeRoy Corron.

In November the Educational Foundation, along with the Virginia Commission for the Arts, the National Endowment for the Arts, American Woodmark Foundation, and Windcrest Foundation, sponsored two youth concerts for 1,600 fourth graders in the college's service region. This type of programming was well received by the children and school systems and will be regularly featured in the new Corron Community Cultural Center.

The scholarship program offered through the Educational Foundation continues to grow. Currently the scholarship investment endowment exceeds \$1.7 million. Seventy-three students were awarded scholarships during the past year and eleven new scholarships were created to include the following:

- Allegheny Energy Scholarship
- Marilyn C. Beck Endowed Scholarship
- Teresa Evans Callahan Scholarship
- Fauquier Business and Professional Women Scholarship
- William A. Hazel Scholarship
- HOSA LPN to RN Transition Scholarship
- Kiwanis Club of Stephens City Scholarship
- Ladies of Harley Winchester Virginia Chapter Scholarship
- McKinley Chapter #19 Order of the Eastern Star Scholarship
- David M. Smith Memorial Scholarship
- Sergeant Ricky C. Timbrook Memorial Scholarship

A planned gift with an estimated value of \$400,000 was also received during the year. This gift was designated for the scholarship endowment.

Special events are an integral part of the Lord Fairfax Community College development effort. The Educational Foundation hosted 13 special events including art exhibits and receptions for local artists Wiley Wine, Genevia Welch, Murrell Bolliger, Lauri Bridgeforth, Karen Stinnett, and Irmengard Lewis. Fauquier Campus faculty member Bob Ashcom worked with the Foundation to host a booksigning event for his newest release *Lost Hound*. The local artists and faculty member all generously donated a portion of their proceeds to the Educational Foundation.

In conjunction with the college's 30<sup>th</sup> Anniversary, the Foundation hosted a juried art show and a black tie dinner and dance featuring entertainment by The Platters. The gala resulted in the college's most profitable fundraiser in its history generating over \$500,000 for the community cultural center. During the gala Dottie S. Whitt and Kathy Nerangis, Educational Foundation and College Board Chairpersons, respectively, surprised President Marilyn C. Beck with the announcement of an endowed scholarship in her name as a tribute to her leadership, vision, and hard work.

College employees and retirees enjoyed a special end-of-year luncheon co-hosted by the Educational Foundation and College Boards where each of the eight 30-year employees received special recognition. Sue Painter Cooley and Tom Tredon also received special recognition during commencement exercises when they were awarded the B.J. Sager Distinguished Staff and Faculty Awards, respectively.

LFCC has an enviable record of past achievements and is strongly positioned for the 21<sup>st</sup> century. The ultimate challenge for the Educational Foundation is to continue to generate support and resources for the college and to help ensure that the college is even better positioned for the 21<sup>st</sup> century.

## EVENTS SPONSORED FOR THE YEAR 1999-2000

[Return to Table of Contents](#)

- Wiley Wine's Art Exhibit and Reception – September 12, 1999 (\$3,750 raised)
- 10th Annual Shrimp Feast – October 2, 1999 (\$20,922 raised)
- Fauquier Campus Dedication – October 22, 1999 (Loeb Student Center, Sowder Library, and Wolk Hall)
- Genevia Welch's Art Exhibit and Reception at the Fauquier Campus – October 1999
- Fairfax Symphony Youth Concerts at Sherando High School – October 29, 1999 (1,600 Attendees)
- Murrell Bolliger's Art Exhibit and Reception – November 12, 1999 (\$1,900 raised)
- Annual Scholarship Reception – December 9, 1999
- Lauri Bridgeforth's Art Exhibit and Reception – January 9, 2000
- Robert Ashcom's Booksigning of "Lost Hound" – April 2000 (\$690 raised)
- 30th Anniversary Gala – April 29, 2000 (\$507,000 raised)
- Corcoran "A Call to the Arts" Exhibit and Reception – May 18, 2000
- Karen Stinnett's Art Exhibit and Reception at the Fauquier Campus – May 5, 2000
- Irmengard Lewis' Art Exhibit and Reception - June 8, 2000

### Other Notable Events

- Naming of Community Cultural Center by Mrs. Shirley Corron
- Naming of Theatre in Community Cultural Center by Mr. Carl Thompson
- Retained Architectural Firm for Cultural Center and began the Planning/Facilities Process
- Holiday Card dedicated to the memory of David Smith and designed by Murrell Bolliger
- Dedication of the Alfred and Klara Kumkli Student Center
- Children's Garden Project sponsored by Paul Wolk
- Ambassador Farland's donation of book collection
- Arnold Holeywell's donation of painting of the "Old Red Barn" on the Fauquier Campus
- Anniversary Luncheon held for LFCC Employees (Co-Sponsored with College Board)
- Commencement – Medallions of Recognition to Dottie Whitt, Jim Longerbeam, and Kathy Nerangis

# **THE SERVICE REGION**

# THE SERVICE REGION

[Return to Table of Contents](#)



Lord Fairfax Community College serves the citizens of Clarke, Fauquier, Frederick, Page, Rappahannock, Shenandoah, and Warren Counties and the City of Winchester. The service area encompasses 2,559 square miles and has a population of 237,396 (U.S. Census Bureau, 1998 Population Estimates). Over 2.7 million people live within 60 miles of either the Middletown or Fauquier campuses.

## **GEOGRAPHIC AREA**

The College's service area is located in the northwestern portion of Virginia at the intersection of Interstate 66 and Interstate 81—one hour west of the Baltimore/Washington DC metropolitan areas (The Northern Shenandoah Valley Regional Partnership, 1998). The area is predominantly rural with the exception of Winchester.

## **POPULATION SERVED & DEMOGRAPHICS**

Because of the location, natural environment, cultural/historical setting and quality of life in the Northern Shenandoah Valley, the Lord Fairfax Community College Service Region's population continues to grow. Between 1980 and 2000, the College's service area population (with regard to

its 28 year old main campus) increased by just over 24%, a growth rate well above Virginia's 15.8% and the Northern Virginia service area growth of 12.6% (NSVRP, 1998).

Through the end of the 1990's and into the 2000's the population of the service region will continue to grow with an overall rate expected to be 15.3% for the Middletown Campus' service region and 19.1% for the Fauquier Campus' service region – both of which will exceed the state's projection of 7.9% (NSVRP, 1998).

**Table 2.**  
**LFCC Service Region**  
**Demographic and Economic Indicators**

[Return to Table of Contents](#)

	Clarke Co.	Fauquier Co.	Frederick Co.	Page Co.	Rappahannock Co.	Shenandoah Co.	Warren Co.	Winchester City	Service Area
<b>POPULATION AND HOUSING (U.S. Bureau of the Census)</b>									
<b>Total resident population:</b>									
<b>Total Population 1997</b>	12,910	53,167	54,693	22,854	7,051	34,280	30,008	22,433	237,396
<b>Persons 65 years and over</b>	1,889	5,169	5,341	3,736	994	6,048	4,213	3,881	31,271
<b>Median Age</b>	36.5	33.1	33.1	36.2	37.3	37.4	34.0	33.8	35.2
<b>Percent Non-White</b>	10.4	12.5	2.6	2.5	8.0	1.8	5.7	11.4	6.7
<b>Total Population 1980</b>	9,965	35,889	34,150	19,401	6,093	27,559	21,200	20,217	174,474
<b>Total Population 1990</b>	12,101	48,860	45,723	21,690	6,622	31,636	26,142	21,947	214,721
<b>Projected Total Population 2000</b>	13,995	62,500	55,823	23,663	7,299	35,021	30,995	24,113	253,409
<b>Projected Total Population 2010</b>	16,111	72,470	64,878	25,237	7,999	38,077	35,977	26,234	286,983
<b>Occupied housing units, 1990</b>	4,236	16,509	16,470	8,055	2,496	12,452	9,879	9,084	79,181
<b>Percent owner occupied</b>	74.2	73.3	79.1	76.9	72.2	71.5	72.3	45.4	70.6
<b>BIRTHS &amp; DEATHS (National Center for Health Statistics)</b>									
<b>Births, 1993</b>	131	697	711	247	84	364	383	334	2,951
<b>Per 1,000 resident population</b>	10.8	13.7	14.4	11.0	12.1	11.1	13.6	14.9	12.7
<b>Percent to mothers under 20 years of age</b>	11.5	8.9	12.7	16.2	10.7	10.7	11.7	14.7	12.1
<b>Deaths, 1993</b>	115	368	367	231	75	354	270	294	2,074
<b>Per 1,000 resident population</b>	9.5	7.2	7.4	10.3	10.8	10.8	9.6	13.1	9.8
<b>Infant deaths per 1,000 live births, 1993</b>	0.0	7.2	7.0	0.0	0.0	13.7	7.8	3.0	4.8
<b>EDUCATION (U.S. Bureau of the Census)</b>									
<b>Percent high school graduates (25 years &amp; over)</b>	75	79	70	55	67	65	65	69	68
<b>Percent college graduates (25 years &amp; over)</b>	18.6	21.5	14.7	7.9	18.9	11.2	11.8	18.8	15.4
<b>LABOR FORCE (Bureau of Labor Statistics)</b>									
<b>Civilian labor force, 1996</b>	6,310	26,770	30,201	11,583	3,891	17,206	14,654	13,596	124,211
<b>Percent unemployed</b>	3.0	2.9	4.2	7.0	3.8	5.0	5.1	4.3	4.3
<b>PRIV. NONFARM ESTABL. (U.S. Bureau of the Census)</b>									
<b>Total establishments, 1993</b>	258	1,288	665	461	163	796	656	1,499	5,786
<b>Percent retail trade</b>	23.6	19.9	25.6	28.0	20.9	25.3	26.8	28.9	24.9
<b>Percent services</b>	25.6	33.0	24.8	30.6	30.1	32.4	34.0	34.4	30.6
<b>Paid employees, 1993 (including 3/12)</b>	2,129	10,117	9,006	4,979	1,090	11,243	5,631	22,552	66,747
<b>Annual payroll, 1993 (\$1,000)</b>	41,052	205,323	205,365	81,381	18,502	206,081	95,449	494,045	1,347,198
<b>PERS. INCOME (Bureau of Economic Analysis)</b>									
<b>Total personal income, 1994 (\$1,000)</b>	276,696	1,416,200	1,446,468	370,607	148,812	599,516	512,222	*	4,770,521
<b>Per capita (dollars)</b>	22,669	27,544	19,699	16,439	21,213	18,174	17,759	*	20,883
<b>Median household income, 1993</b>	36,554	48,400	37,542	26,975	36,271	29,877	33,574	28,614	35,913
<b>Percent persons below poverty, 1993</b>	9.6	7.1	8.2	13.1	10.2	11.3	11.1	14.3	10.0
<b>AGRICULTURE (U.S. Bureau of the Census)</b>									
<b>Number of farms, 1992</b>	319	925	536	521	312	832	207	*	3,652
<b>Land in farms as percent of total land</b>	60.0	57.0	37.0	33.0	46.0	38.0	29.0	*	42.9
<b>Percent Rural</b>	74.4	90.1	100.0	78.9	100.0	77.8	54.6	0.0	72.0
<b>RETAIL TRADE (U.S. Bureau of the Census)</b>									
<b>Retail sales, 1992 (\$1,000)</b>	29,789	286,009	147,418	125,415	30,532	198,978	163,236	523,202	1,504,579
<b>Per capita (dollars)</b>	2,483	5,637	3,046	5,635	4,520	6,148	5,888	23,555	7,114
<b>COMMERCIAL &amp; SAVINGS BANKS (Federal Deposit Insurance)</b>									
<b>Number of offices, 1997</b>	3	22	14	10	2	18	13	29	111
<b>Total deposits (\$1,000), 1997</b>	108,990	605,053	174,322	228,218	25,623	445,228	252,888	764,327	2,604,649
<b>SOCIAL PROGRAMS (Social Security Administration)</b>									
<b>Total Social Security recipients, 12/93</b>	1,715	5,960	6,270	4,495	1,165	5,495	5,420	4,665	35,185
<b>Retired workers</b>	1,160	3,795	4,120	2,695	675	3,750	3,485	3,110	22,790
<b>Supl. Sec. Income recipients, 12/94</b>	170	428	484	555	159	493	375	636	3,300
<b>FED. FUNDS &amp; GRANTS (U.S. Bureau of the Census)</b>									
<b>Total direct expenditures per capita:</b>									
<b>1994 (dollars)</b>	2,963	4,646	1,759	3,403	3,614	3,489	2,964	7,157	3,749
<b>1990 (dollars)</b>	2,881	2,813	1,327	2,678	2,998	2,752	2,357	4,107	2,739

**Table 3.**  
**Fall Enrollment Projections by Grade**  
**Public School Systems in the LFCC Service Region**  
**to 2001-2002**

District	School Year	Kinder-garten	1st	2nd	3rd	4th	5th	6th	7th	8th	9th	10th	11th	12th	Ungraded	Total
Clarke	1997-98	146	154	139	158	128	132	157	145	157	155	161	118	142	15	1,907
	1998-99	121	151	150	144	163	133	137	159	144	172	154	148	121	15	1,913
	1999-00	124	125	147	155	149	169	138	139	158	159	172	142	153	15	1,945
	2000-01	122	128	121	153	160	154	176	140	138	174	158	158	146	15	1,944
	2001-02	121	127	125	126	157	166	160	178	139	152	174	145	162	15	1,948
Fauquier	1997-98	726	681	730	688	683	707	629	660	626	725	666	590	501	552	9,164
	1998-99	673	736	647	719	684	690	689	639	652	693	695	606	549	556	9,229
	1999-00	634	682	699	636	714	691	673	700	631	723	665	633	564	554	9,199
	2000-01	622	642	647	687	632	722	674	683	692	700	694	605	589	551	9,140
	2001-02	618	630	610	637	683	639	704	684	675	767	671	631	564	546	9,058
Frederick	1997-98	841	846	831	803	772	717	765	793	740	817	756	673	580	321	10,255
	1998-99	829	888	849	857	819	764	759	788	796	803	717	714	637	331	10,550
	1999-00	833	875	891	876	875	811	808	781	791	863	704	678	676	338	10,800
	2000-01	824	880	878	919	894	866	858	832	784	857	757	666	641	345	11,000
	2001-02	818	870	883	905	937	885	916	883	835	850	752	716	630	352	11,232
Page	1997-98	260	287	283	274	269	285	288	289	330	297	283	214	228	15	3,602
	1998-99	245	275	283	286	277	275	290	292	326	316	264	260	197	15	3,602
	1999-00	247	259	271	286	290	284	280	294	329	312	281	243	239	15	3,630
	2000-01	228	261	256	274	290	297	288	284	331	315	277	258	223	15	3,598
	2001-02	226	241	258	258	277	296	302	293	320	317	280	255	237	15	3,576
Rappahannock	1997-98	74	75	78	97	93	99	82	84	84	66	81	66	60	9	1,048
	1998-99	74	72	75	80	103	93	100	85	97	77	61	78	68	9	1,072
	1999-00	46	72	71	77	85	103	94	105	98	90	72	59	80	9	1,060
	2000-01	64	45	71	74	81	85	104	99	121	91	83	68	60	9	1,054
	2001-02	63	62	45	74	78	82	86	108	114	111	84	79	71	9	1,064
Shenandoah	1997-98	381	423	424	380	435	426	408	406	418	447	353	436	329	75	5,343
	1998-99	360	381	414	425	393	447	431	408	404	468	378	357	397	75	5,338
	1999-00	419	360	373	414	439	403	452	432	406	451	395	383	325	75	5,327
	2000-01	375	419	352	373	428	450	408	453	429	454	381	400	348	75	5,346
	2001-02	372	375	409	353	386	440	456	408	450	479	383	386	364	75	5,336
Warren	1997-98	385	414	398	411	378	414	361	395	354	358	324	293	232	29	4,747
	1998-99	344	395	428	408	415	387	400	367	386	386	298	279	272	29	4,794
	1999-00	430	353	408	439	412	425	373	407	359	421	321	256	258	30	4,892
	2000-01	377	441	364	419	444	422	410	380	397	391	351	276	238	30	4,938
	2001-02	374	387	456	374	423	454	407	417	371	433	326	301	256	30	5,008
Winchester City	1997-98	270	312	294	243	226	261	276	283	217	246	209	208	216	107	3,369
	1998-99	277	267	292	283	233	238	288	276	264	239	224	179	195	107	3,364
	1999-00	279	274	250	281	271	245	263	289	257	291	218	192	168	108	3,385
	2000-01	250	275	256	241	269	286	270	263	269	283	265	186	180	108	3,403
	2001-02	249	247	258	247	230	284	315	271	245	296	258	227	175	108	3,410
LFCC Service Region	1997-98	3,083	3,193	3,178	3,054	2,984	3,042	2,966	3,057	2,925	3,111	2,834	2,598	2,288	1,124	39,434
	1998-99	2,922	3,165	3,138	3,203	3,086	3,028	3,095	3,015	3,069	3,154	2,792	2,621	2,436	1,137	39,861
	1999-00	3,012	2,999	3,110	3,165	3,234	3,131	3,082	3,146	3,030	3,309	2,828	2,584	2,463	1,144	40,238
	2000-01	2,862	3,092	2,947	3,139	3,198	3,282	3,188	3,133	3,160	3,265	2,966	2,617	2,425	1,148	40,423
	2001-02	2,841	2,938	3,044	2,973	3,172	3,246	3,346	3,242	3,148	3,406	2,928	2,740	2,458	1,151	40,633

Source: Weldon Cooper Center for Public Service

# **Enrollment & Student Characteristics**

## ABOUT THIS SECTION

The tables and charts in this section of the Fact Book provide a historical summary of enrollment trends, graduates, and a host of student specific information. Readers will find most of the charts and tables self-explanatory. In some cases additional narrative will be included for clarification.

### GENERAL ENROLLMENT & STUDENT CHARACTERISTICS

*FTE Enrollment.* Lord Fairfax Community College has experienced tremendous growth in student enrollment. The annualized full-time equivalent (FTE) enrollment at Lord Fairfax Community College has almost doubled over the past decade, reaching 1,946 in 1998-99 and 2,164 in 1999-00. For the past several years the College has surpassed SCHEV FTE estimates by as much as 18 percent.

*Racial and Ethnic Characteristics.* The racial composition of the student body indicates substantial growth in the number of African-American students during the past 10 years. According to the Lord Fairfax Community College Student Enrollment Books, the enrollment in all minority groups has increased 207.5 percent. Minorities comprise 7.9 percent of the College enrollment, which approximates service region ethnic characteristics.

*Age Characteristics.* During the Fall 1999, ten percent of the students were under the age of 18. Thirty-five percent of the student population was 18 to 21 years of age. Nine percent of the population was 22 to 24 years of age. Nineteen percent were 25 to 34. Sixteen percent of the student population was 35 to 44 years of age. Eleven percent of the student population was age 45 to 59. One percent of the student population was 60 years of age and older.

*Gender Characteristics.* Female students comprise 60 percent of the population. Female headcount enrollment increased from 1,419 in fall 1986 to 2,466 in fall 1999, which constitutes a 72 percent increase over the past 13 years. At the same time, male headcount enrollment increased from 811 in fall 1986 to 1,645 in fall 1999.

*Financial Aid Awards.* Given the low median family income of the area, the number of students applying for and receiving financial aid awards has been steadily increasing. Since 1987-88, the number of awards has increased by 404.5 percent (from 134 to 676), and the total dollar amount awarded has increased by 791 percent (from \$97,971 to \$872,950).

**Table 4.**  
**Annual \*Full-time Equivalent (FTE) and**  
**\*\*Unduplicated Headcount**  
**1971-72 through 1999-2000**

Year	FTE	Unduplicated Headcount
1971-72	391	1,092
1972-73	582	1,263
1973-74	537	1,588
1974-75	625	1,668
1975-76	788	2,201
1976-77	757	2,177
1977-78	765	2,650
1978-79	814	2,798
1979-80	839	2,855
1980-81	918	2,924
1981-82	891	2,821
1982-83	896	2,889
1983-84	818	2,870
1984-85	735	2,705
1985-86	802	3,179

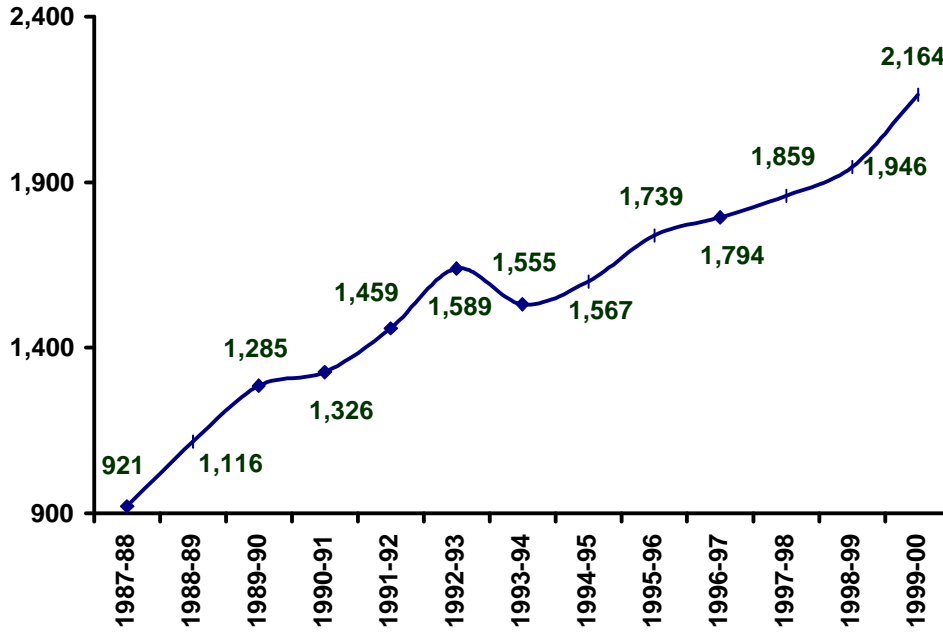
Year	FTE	Unduplicated Headcount
1986-87	891	3,527
1987-88	921	3,766
1988-89	1,116	3,800
1989-90	1,285	4,193
1990-91	1,326	4,020
1991-92	1,459	4,482
1992-93	1,589	4,900
1993-94	1,555	4,475
1994-95	1,567	4,478
1995-96	1,739	4,693
1996-97	1,794	4,882
1997-98	1,859	5,047
1998-99	1,946	5,438
1999-00	2,164	5,985

Source: Student Enrollment Books, end of Fall terms, Table 15 Student Enrollment Summary

*\*Full-time Equivalent (FTE) is a term used to identify the “typical” student for budget purposes. One annual FTE is defined as one student taking 30 credits in an academic year.*

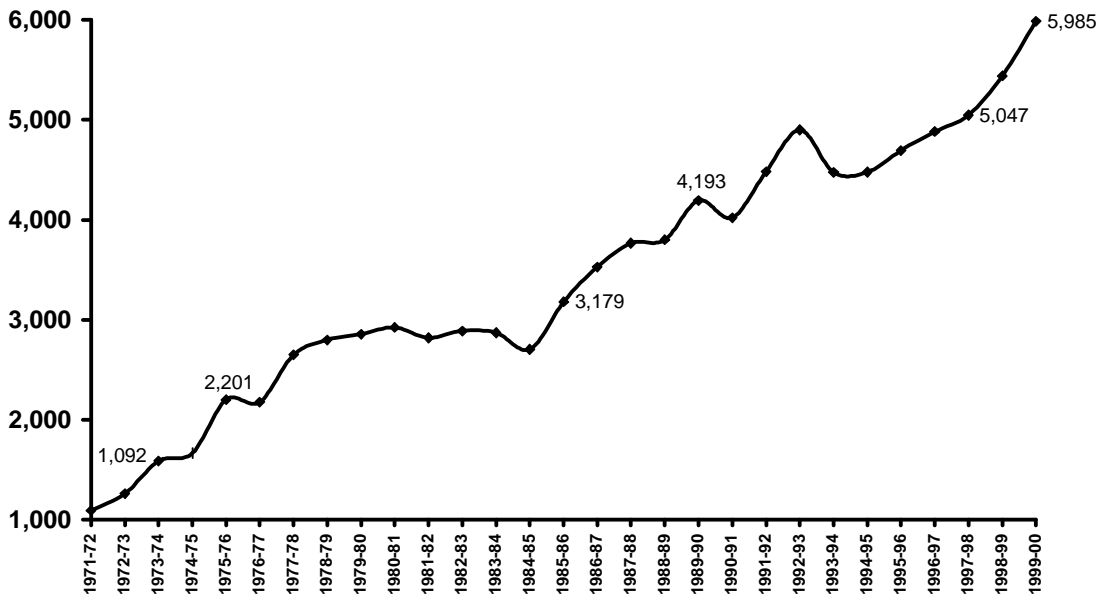
*\*\*Unduplicated Headcount is a measure of the actual number of persons taking courses. For example, one student enrolled for a one-credit course is counted the same as one student enrolled for four three-credit courses. Whether the student is enrolled for one semester or three semesters they are counted only once.*

**Figure 1.**  
**Annual FTE Trends**  
**1987-1988 through 1999-2000**



*Source: Student Enrollment Books, Table 15 Student Enrollment Summary*

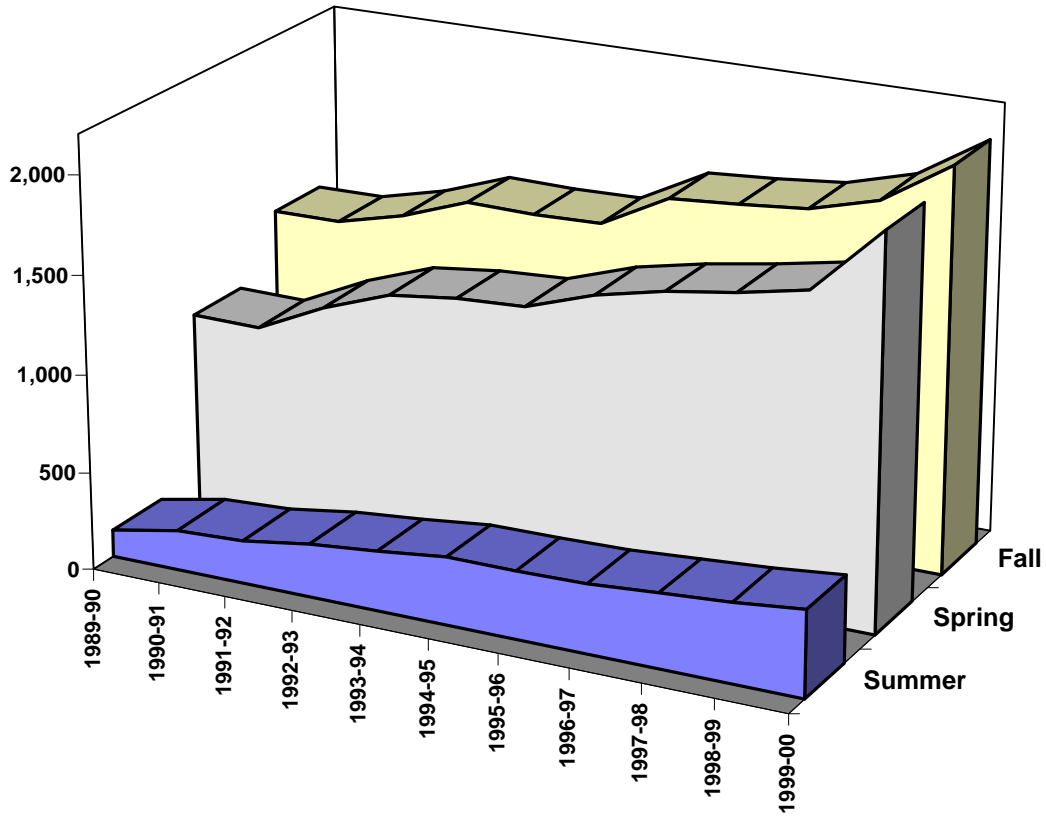
**Figure 2.**  
**Annual Unduplicated Headcount Trends**  
**1971-1972 through 1999-2000**



*Source: Table 1A (UDT01A) Total Student Enrollment by Full-time, Part-time, Sex and Type of Program*

**Figure 3.  
Full Time Equivalent Enrollment  
Semester Trends  
1989-1990 through 1999-2000**

[Return to Table of Contents](#)



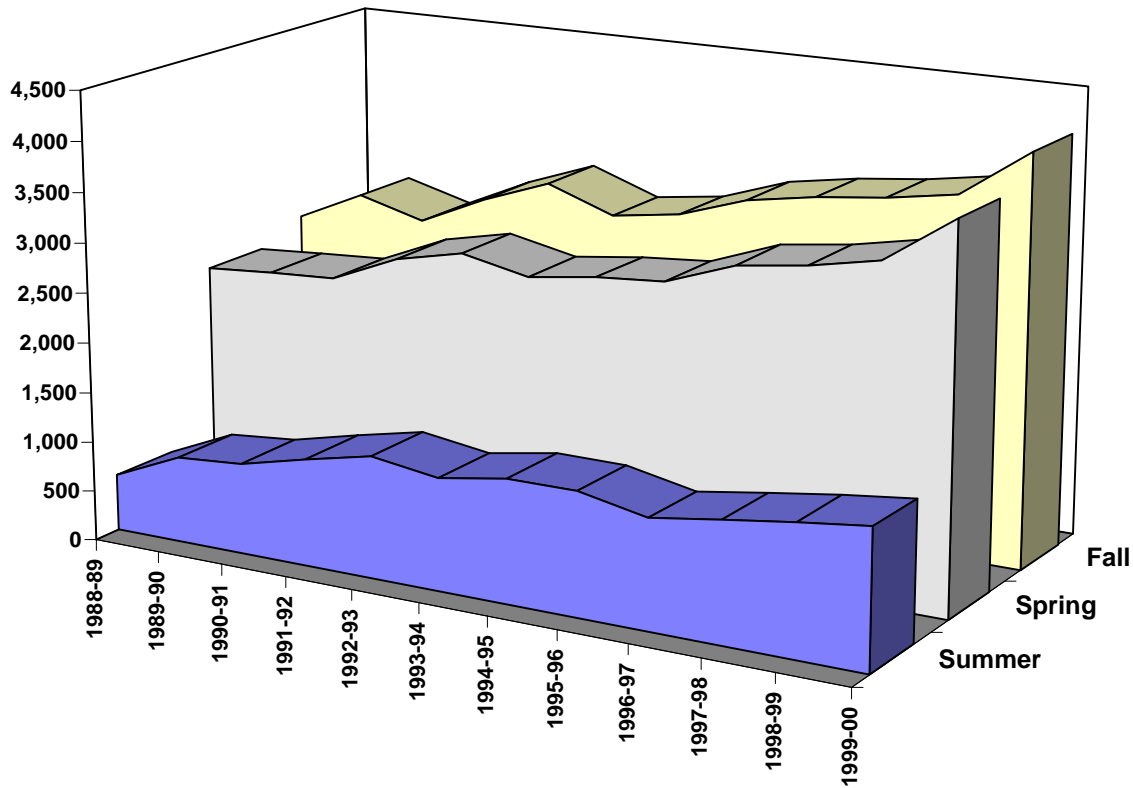
Year	Summer	Fall	Spring
1989-90	139	1,101	989
1990-91	204	1,287	982
1991-92	221	1,288	1,144
1992-93	274	1,374	1,269
1993-94	306	1,494	1,310
1994-95	345	1,501	1,329
1995-96	345	1,684	1,445
1996-97	353	1,710	1,522
1997-98	378	1,762	1,577
1998-99	403	1,842	1,645
1999-00	439	1,993	1,822

---

*Source: Student Enrollment Books, end of terms, Table 15 Student Enrollment Summary*

**Figure 4.  
Unduplicated Headcount  
Semester Trends  
1989-1990 through 1999-2000**

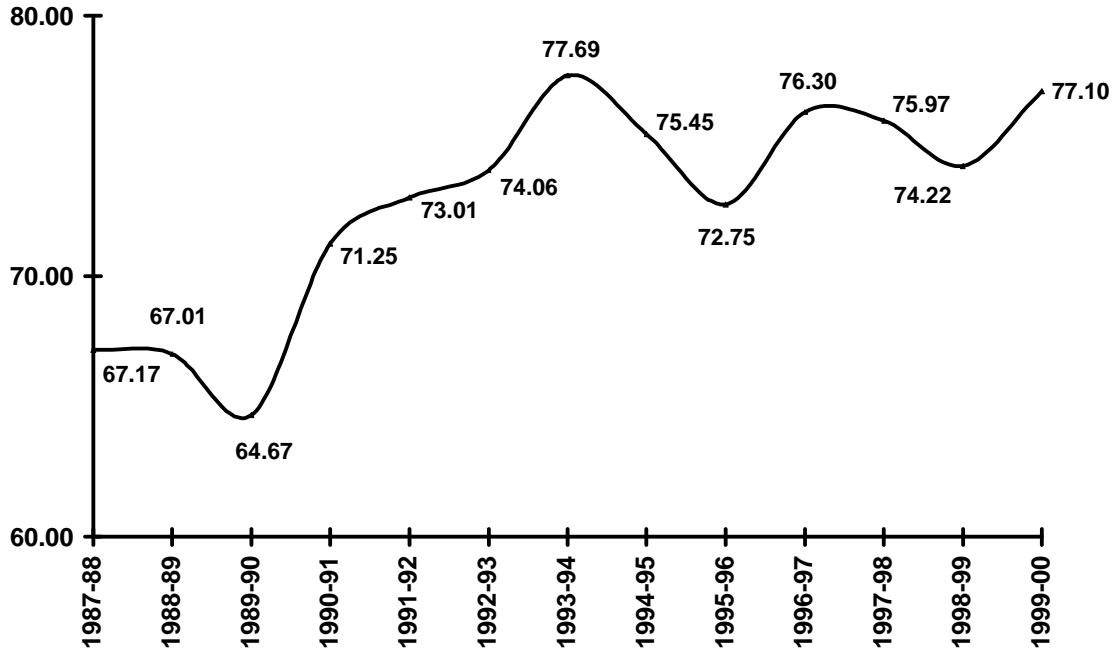
[Return to Table of Contents](#)



Year	Summer	Fall	Spring
1988-89	561	2,498	2,304
1989-90	856	2,819	2,357
1990-91	912	2,633	2,392
1991-92	1,071	2,949	2,685
1992-93	1,219	3,200	2,835
1993-94	1,121	2,958	2,696
1994-95	1,232	3,059	2,788
1995-96	1,232	3,292	2,842
1996-97	1,094	3,414	3,097
1997-98	1,199	3,496	3,192
1998-99	1,297	3,612	3,335
1999-00	1,381	4,111	3,817

*Source: Student Enrollment Books, end of terms, Table 15 Student Enrollment Summary*

**Figure 5.**  
**Percent of Fall Enrollees Returning in Spring**  
**1987-1988 through 1999-2000**



*Source: Student Enrollment Books, Spring semesters, Table 15 Student Enrollment Summary*

*Students returning between Fall and Spring semesters, sometimes called “semester carryover,” is a simple, yet important student retention measure. Please note that the ordinal scale (percentage) was reduced to more clearly show fluctuations.*

**Table 5.**  
**Annual Retention Rate of**  
**Full- and Part-time Students**

	1997-1998	1998-1999	1999-2000
<b>Overall</b>	58.8%	53.2%	56.9%
<b>Full-time</b>	77.9%	76.1%	78.6%
<b>Part-time</b>	51.1%	41.8%	46.6%

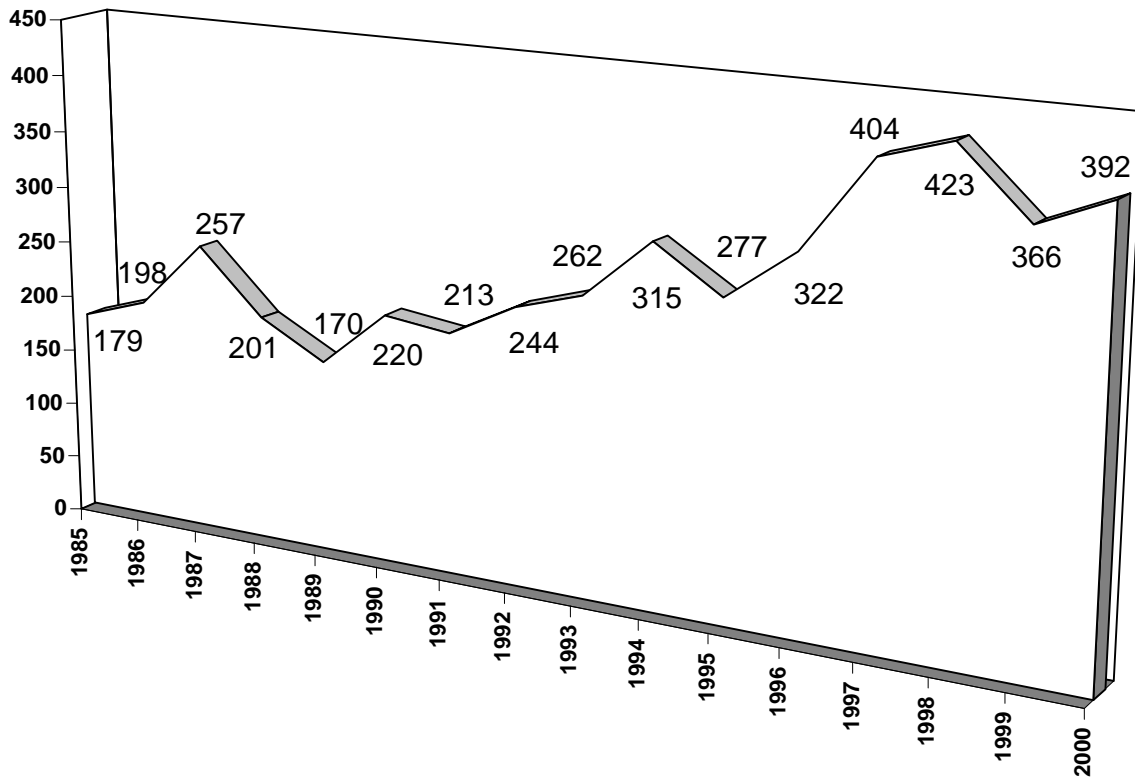
*Source: 1999-2000 LFCC End of Cycle Report*

**Table 6.**  
**Fall 1999 to Spring 2000 \*Retention**  
**of First-time Students by Campus**

Enrollment Status	Middletown			Fauquier			College		
	Started Fall 99	Returned Spring 00	Retention Rate	Started Fall 99	Returned Spring 00	Retention Rate	Started Fall 99	Returned Spring 00	Retention Rate
Part-time 1-5	431	174	40.4%	120	37	30.8%	551	211	38.3%
Part-time 6-11	265	145	54.7%	113	77	68.1%	378	222	58.7%
Full-time 12+	337	268	79.5%	103	78	75.7%	440	346	78.6%
Total	1,033	587	56.8%	336	192	57.1%	1,369	779	56.9%

*\*Not controlled for dual-enrolled students, because the Fall to Spring retention rates were virtually the same.*

**Figure 6.**  
**Number of Graduates**  
**1985 to 2000**



[Return to Table of Contents](#)

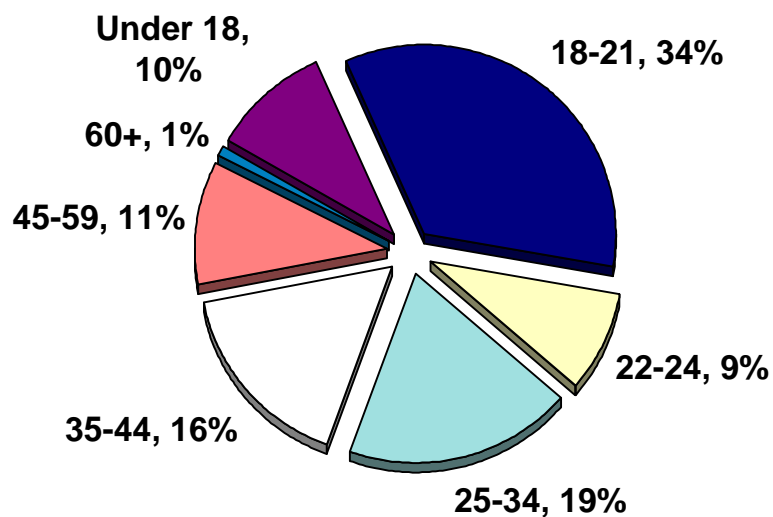
**Table 7  
Graduate and Awards  
Comparison 1990-2000**

YEAR	GRADS	AA&S	AAS	CERT	CSC	AWARDS
1990	220	80	88	19	90	277
1991	213	110	56	9	69	244
1992	244	129	75	15	75	294
1993	262	124	72	16	101	313
1994	316	146	112	21	119	398
1995	277	149	88	9	85	331
1996	322	191	94	15	113	413
1997	404	215	124	45	110	494
1998	423	225	102	40	116	483
1999	366	187	99	29	120	435
2000	392	209	107	39	92	447

*Source: Admissions & Records*

[Return to Table of Contents](#)

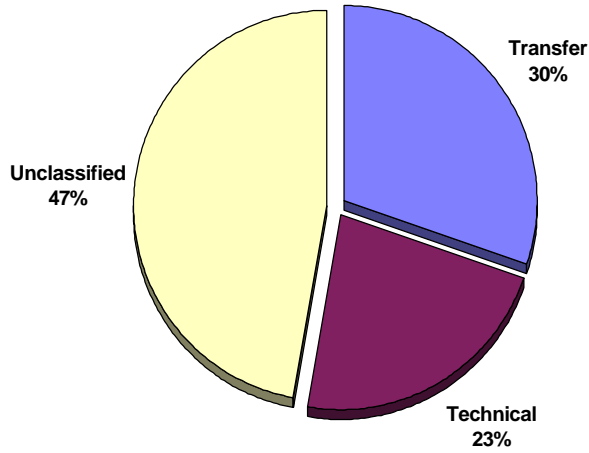
**Figure 7.  
Unduplicated Headcount  
by Age Fall 1999**



*Source: Student Enrollment Books, end of Fall Semester, Table 15 Student Enrollment Summary*

**Figure 8.**  
**Unduplicated Headcount by Transfer,**  
**Technical and Unclassified**  
**Fall 1999**

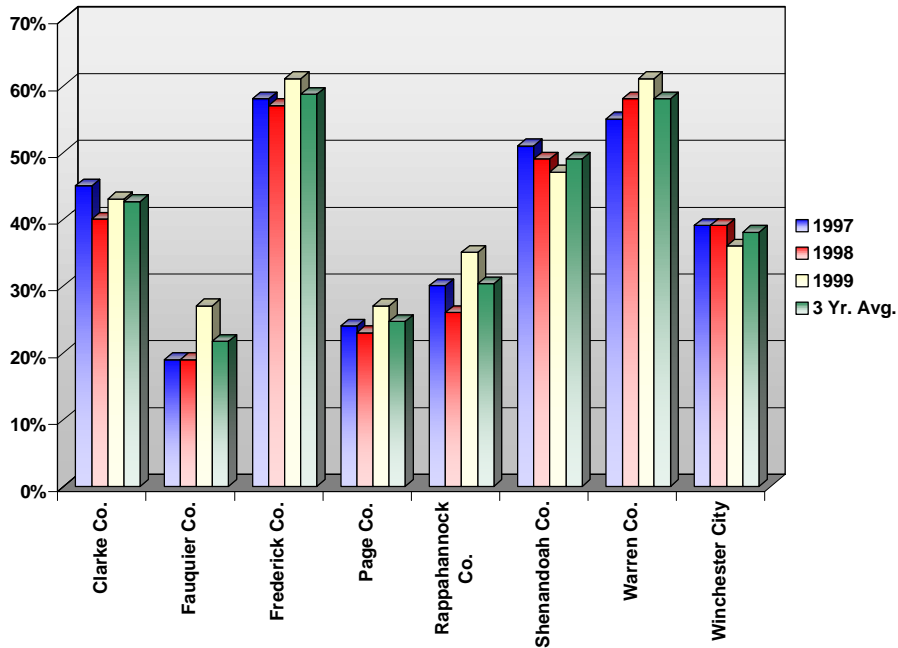
[Return to Table of Contents](#)



Source: VCCS Academic Services & Research

**Figure 9.**  
**Percent of College-Bound Residents Enrolled at**  
**Lord Fairfax Community College, Fall 1997 – Fall 1999**

[Return to Table of Contents](#)



**Table 8.**  
**Unduplicated Headcount by Race/Ethnicity**  
**Fall Semesters 1973 to 1999**

Year	White	%	African Amer.	%	American Native	%	Asian & Pac. Isl.	%	Hispanic	%	Other	%	Total
1973	944	96.3%	26	2.7%	0	0.0%	2	0.2%	4	0.4%	4	0.4%	980
1974	1,024	97.6%	19	1.8%	1	0.1%	3	0.3%	1	0.1%	1	0.1%	1,049
1975	1,350	96.7%	36	2.6%	3	0.2%	3	0.2%	2	0.1%	2	0.1%	1,396
1976	1,328	96.9%	32	2.3%	2	0.1%	4	0.3%	2	0.1%	2	0.1%	1,370
1977	1,645	96.5%	46	2.7%	1	0.1%	5	0.3%	3	0.2%	5	0.3%	1,705
1978	1,707	96.2%	53	3.0%	1	0.1%	6	0.3%	4	0.2%	3	0.2%	1,774
1979	1,827	96.0%	59	3.1%	0	0.0%	6	0.3%	6	0.3%	5	0.3%	1,903
1980	1,842	94.0%	88	4.5%	2	0.1%	12	0.6%	9	0.5%	6	0.3%	1,959
1981	1,889	96.5%	58	3.0%	2	0.1%	7	0.4%	2	0.1%	0	0.0%	1,958
1982	1,706	96.8%	46	2.6%	2	0.1%	6	0.3%	2	0.1%	1	0.1%	1,763
1983	1,774	97.4%	42	2.3%	1	0.1%	2	0.1%	1	0.1%	1	0.1%	1,821
1984	1,638	97.6%	35	2.1%	0	0.0%	2	0.1%	1	0.1%	3	0.2%	1,679
1985	1,903	96.8%	48	2.4%	1	0.1%	10	0.5%	2	0.1%	2	0.1%	1,966
1986	2,163	97.0%	49	2.2%	5	0.2%	9	0.4%	2	0.1%	2	0.1%	2,230
1987	2,184	96.9%	55	2.4%	5	0.2%	3	0.1%	7	0.3%	0	0.0%	2,254
1988	2,412	96.6%	66	2.6%	4	0.2%	11	0.4%	5	0.2%	0	0.0%	2,498
1989	2,713	96.2%	73	2.6%	2	0.1%	21	0.7%	9	0.3%	1	0.0%	2,819
1990	2,512	95.4%	89	3.4%	2	0.1%	16	0.6%	10	0.4%	4	0.2%	2,633
1991	2,814	95.4%	95	3.2%	5	0.2%	14	0.5%	15	0.5%	6	0.2%	2,949
1992	3,018	94.3%	136	4.3%	4	0.1%	22	0.7%	14	0.4%	6	0.2%	3,200
1993	2,903	94.5%	115	3.7%	8	0.3%	16	0.5%	22	0.7%	8	0.3%	3,072
1994	2,828	93.7%	125	4.1%	6	0.2%	22	0.7%	22	0.7%	14	0.5%	3,017
1995	3,046	92.5%	146	4.4%	18	0.5%	33	1.0%	27	0.8%	22	0.7%	3,292
1996	3,191	93.5%	134	3.9%	5	0.1%	25	0.7%	35	1.0%	24	0.7%	3,414
1997	3,275	93.7%	131	3.7%	8	0.2%	20	0.6%	34	1.0%	28	0.8%	3,496
1998	3,370	93.3%	138	3.8%	7	0.2%	26	0.7%	40	1.1%	31	0.9%	3,612
1999	3,785	92.1%	172	4.8%	17	0.5%	36	1.0%	49	1.4%	52	1.4%	4,111

*Source: Student Enrollment Books, end of fall terms, Table 3A Student Enrollment by Race*

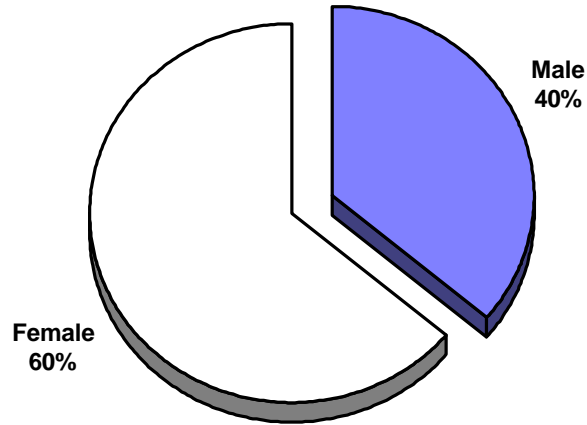
**Table 9.**  
**In-District Student Headcount by Region**  
**Fall Semesters 1973 to 1999**

Year	Clarke	% of Clarke	Fauquier	% of Fauquier	Frederick	% of Frederick	Page	% of Page	Rappahannock	% of Rappahannock	Shenandoah	% of Shenandoah	Warren	% of Warren	Winchester	% of Winchester	In District Total
1973	76	8.3	27	2.9	266	28.9	36	3.9	12	1.3	169	18.4	131	14.3	202	22.0	919
1974	65	6.7	19	2.0	280	28.7	35	3.6	19	2.0	188	19.3	148	15.2	220	22.6	974
1975	85	6.4	18	1.3	401	30.1	37	2.8	23	1.7	222	16.6	247	18.5	301	22.6	1,334
1976	82	6.3	12	0.9	404	31.1	37	2.9	12	0.9	236	18.2	201	15.5	313	24.1	1,297
1977	105	6.5	18	1.1	477	29.4	80	4.9	31	1.9	282	17.4	245	15.1	385	23.7	1,623
1978	115	6.8	15	0.9	475	28.0	65	3.8	33	1.9	297	17.5	317	18.7	378	22.3	1,695
1979	136	7.5	14	0.8	508	28.0	132	7.3	31	1.7	306	16.9	322	17.8	363	20.0	1,812
1980	131	7.1	13	0.7	585	31.6	95	5.1	23	1.2	328	17.7	312	16.8	367	19.8	1,854
1981	131	7.0	8	0.4	594	31.8	86	4.6	33	1.8	366	19.6	284	15.2	364	19.5	1,866
1982	135	8.0	6	0.4	525	31.1	80	4.7	21	1.2	320	18.9	291	17.2	312	18.5	1,690
1983	123	7.0	9	0.5	562	32.1	112	6.4	27	1.5	345	19.7	278	15.9	293	16.8	1,749
1984	83	5.1	12	0.7	499	30.6	95	5.8	26	1.6	319	19.5	284	17.4	315	19.3	1,633
1985	127	6.7	21	1.1	618	32.6	79	4.2	22	1.2	383	20.2	339	17.9	305	16.1	1,894
1986	148	6.9	40	1.9	625	29.0	116	5.4	37	1.7	442	20.5	365	17.0	380	17.6	2,153
1987	156	7.3	34	1.6	663	30.8	93	4.3	33	1.5	426	19.8	316	14.7	430	20.0	2,151
1988	161	6.8	84	3.5	803	33.9	128	5.4	21	0.9	425	18.0	339	14.3	406	17.2	2,367
1989	164	6.2	152	5.8	905	34.4	97	3.7	77	2.9	463	17.6	363	13.8	411	15.6	2,632
1990	160	6.6	120	4.9	905	37.2	127	5.2	47	1.9	397	16.3	333	13.7	342	14.1	2,431
1991	169	6.2	180	6.6	1,003	36.5	112	4.1	49	1.8	463	16.9	399	14.5	370	13.5	2,745
1992	148	5.0	266	8.9	1,036	34.8	117	3.9	78	2.6	483	16.2	497	16.7	354	11.9	2,979
1993	146	5.1	258	9.0	1,013	35.5	85	3.0	79	2.8	462	16.2	467	16.4	346	12.1	2,856
1994	161	5.7	262	9.3	977	34.7	97	3.4	71	2.5	461	16.4	439	15.6	345	12.3	2,813
1995	153	5.0	310	10.1	972	31.7	127	4.1	95	3.1	548	17.9	486	15.9	372	12.1	3,063
1996	169	5.4	275	8.7	1,062	33.7	134	4.3	94	3.0	533	16.9	483	15.3	400	12.7	3,150
1997	150	4.7	313	9.8	1,114	35.0	111	3.5	77	2.4	553	17.4	480	15.1	382	12.0	3,180
1998	133	4.1	343	10.5	1,172	36.0	110	3.4	61	1.9	547	16.8	510	15.7	376	11.6	3,252
1999	176	4.8	519	14.1	1,330	36.0	138	3.7	83	2.2	498	13.5	505	13.7	442	12.0	3,691

*Source: Student Enrollment Books, Table 8A Student Enrollment by Residence*

**Figure 10.  
Unduplicated Headcount  
by Gender  
Fall 1999**

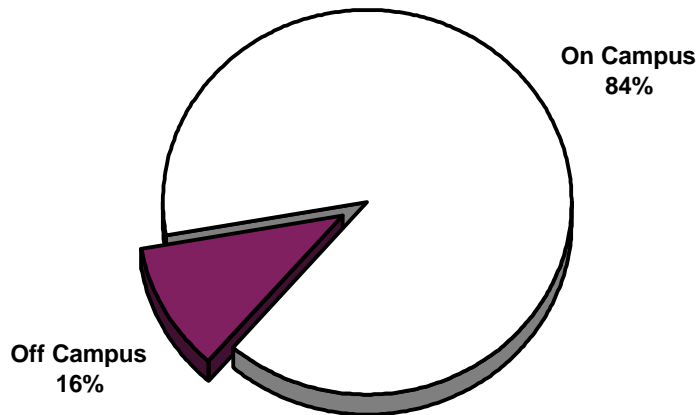
[Return to Table of Contents](#)



*Source: Student Enrollment Books, end of fall, Table 15 Student Enrollment Summary*

**Figure 11.  
Unduplicated Headcount  
by On/Off Campus  
Fall 1999**

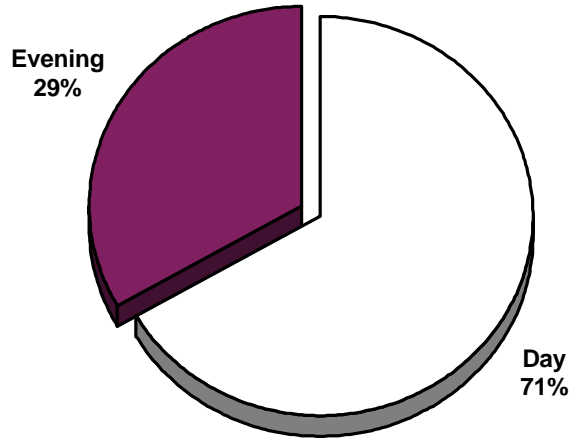
[Return to Table of Contents](#)



*Source: Student Enrollment Books, end of fall, Table 15 Student Enrollment Summary*

**Figure 12.  
Unduplicated Headcount  
by Day/Evening  
Fall 1999**

[Return to Table of Contents](#)



*Source: Student Enrollment Books, end of fall, Table 15 Student Enrollment Summary*

**Table 10.  
Headcount by Award: Degrees,  
Certificates and Unclassified Students  
1986-1999**

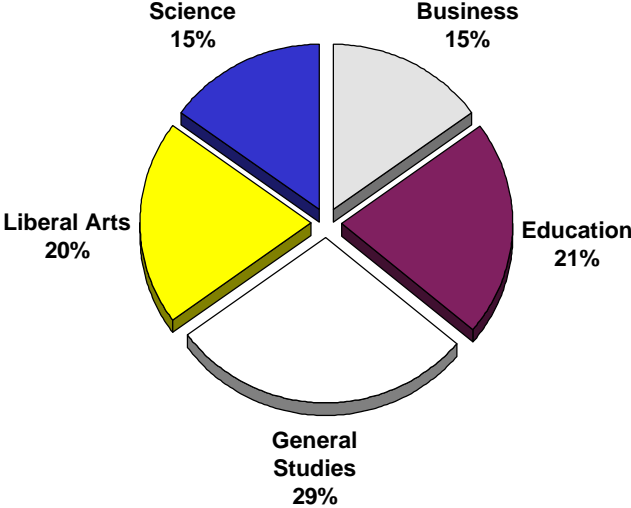
[Return to Table of Contents](#)

Year	Arts & Sciences	%	Applied Science	%	Certificates	%	Unclassified	%	Total
1986	388	17.4%	461	20.7%	266	11.9%	1,115	50.0%	2,230
1987	480	21.3%	453	20.1%	182	8.1%	1,139	50.5%	2,254
1988	573	23.3%	437	17.8%	142	5.8%	1,308	53.2%	2,460
1989	666	23.6%	560	19.9%	131	4.6%	1,462	51.9%	2,819
1990	778	30.0%	474	18.3%	114	4.4%	1,229	47.4%	2,595
1991	867	29.4%	559	19.0%	138	4.7%	1,385	47.0%	2,949
1992	917	28.7%	599	18.7%	147	4.6%	1,537	48.0%	3,200
1993	961	31.3%	695	22.6%	107	3.5%	1,309	42.6%	3,072
1994	1,008	33.4%	661	21.9%	93	3.1%	1,255	41.6%	3,017
1995	1,140	34.6%	646	19.6%	127	3.9%	1,379	41.9%	3,292
1996	1,084	31.7%	609	17.8%	146	4.3%	1,579	46.2%	3,418
1997	1,097	31.2%	594	16.9%	192	5.5%	1,631	46.4%	3,514
1998	1,107	30.6%	646	17.9%	199	5.5%	1,660	46.0%	3,612
1999	1,241	30.2%	687	16.7%	200	4.9%	1,983	48.2%	4,111

*Source: Student Enrollment Books, end of fall terms, Table 6G Student Enrollment by Age and Curriculum*

[Return to Table of Contents](#)

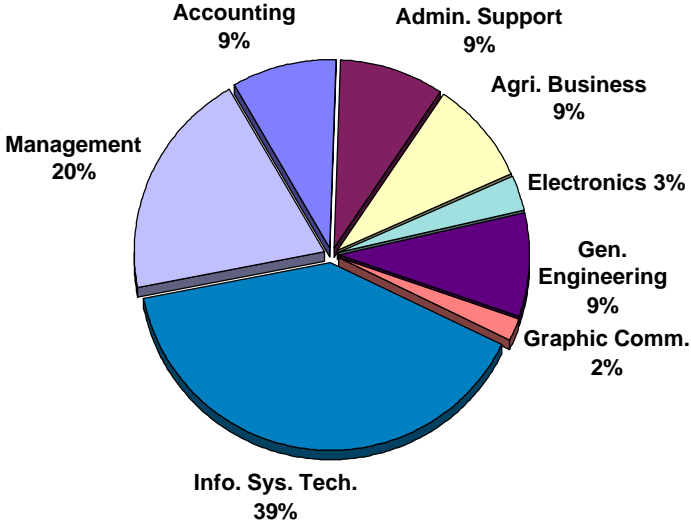
**Figure 13.**  
**Arts and Sciences**  
**Enrollment by Curriculum**  
**Fall 1999**



Source: Student Enrollment Books, end of fall, Table 6G Student Enrollment by Age and Curriculum. Based on 1,241 students enrolled in Arts & Sciences.

[Return to Table of Contents](#)

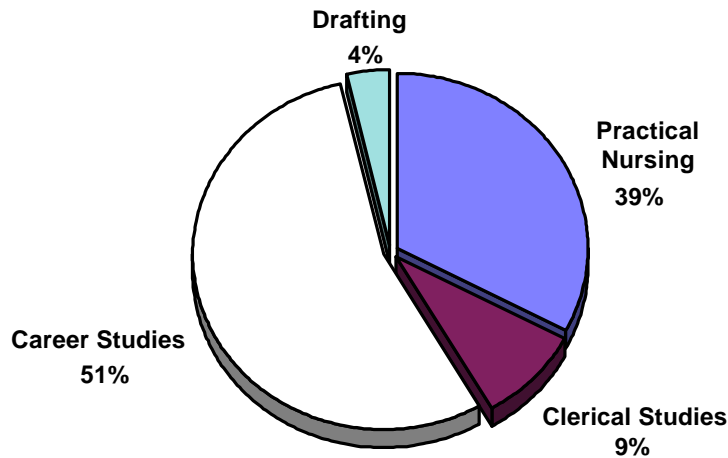
**Figure 14.**  
**Applied Science and Technology**  
**Enrollment by Curriculum**  
**Fall 1999**



Source: Student Enrollment Books, end of fall, Table 6G Student Enrollment by Age and Curriculum. Based on 646 students enrolled in Applied Sciences.

[Return to Table of Contents](#)

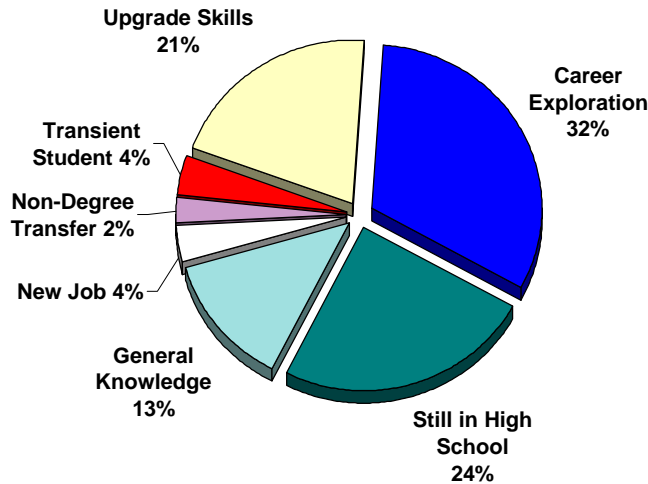
**Figure 15.**  
**Certificate Enrollment by Curriculum**  
**Fall 1999**



Source: Student Enrollment Books, end of fall 1999, Table 6G Student Enrollment by Age and Curriculum. Based on 200 students enrolled in certificate programs.

[Return to Table of Contents](#)

**Figure 16.**  
**Educational Objectives of \*Unclassified Students**  
**Fall 1999**

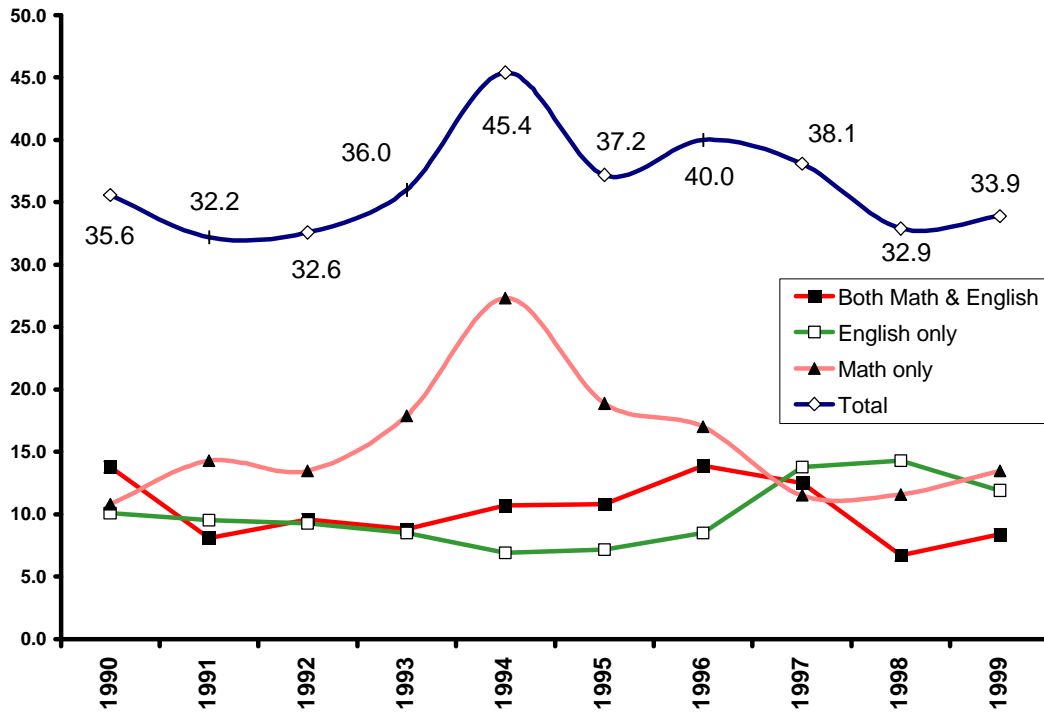


Source: Student Enrollment Books, end of fall, Table 6G Student Enrollment by Age and Curriculum. Based on 1,983 Unclassified Students.

*\*Refers to students not currently enrolled in a degree program. Even though anecdotal evidence indicates that most “unclassified” students would benefit by being program placed it appears that students do have valid reasons for not being enrolled in programs. Research is needed to better understand this population, because it has the greatest potential for increased FTE generation.*

**Figure 17.**  
**Percent of Students Taking Developmental Courses**  
**by Year of High School Graduation, 1990-1999**

[Return to Table of Contents](#)



Source: RADSS routine PFNRL03H

**Table 11.**  
**Dual Credit Enrollment Headcount**  
**by Semester, 1992-93 through 1999-2000**

[Return to Table of Contents](#)

Year	Summer	Fall	Spring
1992-93	--	60	56
1993-94	10	63	66
1994-95	13	60	43
1995-96	12	162	171
1996-97	17	193	185
1997-98	21	202	200
1998-99	34	235	267
1999-00	48	484	433

Source: Student Enrollment Books, end of terms, Table 3XX Categories of Unclassified High School Students

Dual credit enrollment: current high school students receiving both high school and college credit when taking approved college courses.

**Table 12.**  
**Financial Aid Awards**  
*(Pell Students and Dollars)*  
**1987-88 through 1999-2000**

<b>Year</b>	<b>Students</b>	<b>Dollars</b>
<b>1987-88</b>	134	\$97,971
<b>1988-89</b>	191	\$190,070
<b>1989-90</b>	256	\$263,075
<b>1990-91</b>	282	\$290,193
<b>1991-92</b>	406	\$476,970
<b>1992-93</b>	598	\$719,250
<b>1993-94</b>	594	\$765,460
<b>1994-95</b>	624	\$753,106
<b>1995-96</b>	601	\$739,202
<b>1996-97</b>	663	\$732,773
<b>1997-98</b>	644	\$779,387
<b>1998-99</b>	680	\$880,732
<b>1999-00</b>	676	\$872,950

*Source: Financial Aid Records*

# **PERSONNEL**

# PERSONNEL

[Return to Table of Contents](#)

## GENERAL INFORMATION

The character of the people associated with an organization is the measure of the true strength of that organization. Lord Fairfax Community College is the best community college in the country because of its people. This section of the Fact Book is only a synopsis of the information found in the Human Resources section of the *2000-2002 College Catalog*.

## STAFF CHARACTERISTICS

As a group, Lord Fairfax Community College's staff are a highly skilled collection of professionals who use their many talents to execute diverse functions on campus. LFCC's friendly and knowledgeable staff is critical to the success of the College. They are often the first and only contact with a prospective student before that person decides whether to enroll. This warmth is encouraging to continuing students, students who are coming to the College directly from high school or those who are hesitantly returning to school after many years of doing something else.

## FACULTY CHARACTERISTICS

A primary dedication to excellent teaching has long been the hallmark of the College's faculty. A strong, local tradition of faculty governance sustains active and widespread faculty involvement in institutional committees, college planning, and professional and community involvement. Within the constraints of extremely high teaching demands, most faculty are actively involved in innovative teaching techniques and the presentations of papers or exhibits to state and regional audiences.

For fall 2000, there are 53 full-time and 145 part-time teaching faculty members employed at the College. In addition, 53 faculty members were employed through continuing education in the Fall of 2000. Of the 53 full-time teaching faculty, 7 have the doctor's degree, 43 have a minimum of the master's degree, and 3 have a minimum of the bachelor's degree.

## ADMINISTRATIVE CHARACTERISTICS

The College has a strong, well-qualified administrative team. This administrative team has accepted the challenge to create new definitions of community that take best advantage of leading edge technologies and bring new levels of access and new capabilities to individuals in all instructional programs.

Administrators are not only involved in the operation of the College they are also very visible in the local community and abroad to garner support for the College. Administrators can be found serving as members and leaders of civic, service and professional organizations or teaching on campus as well as dual-enrollment classes in the local high schools. Seeking information and input from faculty, staff and students, the administrative team is continually working to involve the entire campus community in the planning and decision-making process.

**Table 13.**  
**Full-time Personnel**  
**by Category**  
**Fall 2000**

[Return to Table of Contents](#)

<b>Category</b>	<b>Number of Employees</b>
<b>Administrators</b>	19
<b>Grant Administrators</b>	2
<b>Total Administrators</b>	21
<b>Faculty</b>	52
<b>Grant Faculty</b>	1
<b>Total Faculty</b>	53
<b>Staff</b>	59
<b>Grant Staff</b>	4
<b>Total Staff</b>	63
<b>Total</b>	137

*Source: LFCC Personnel Records*

**Table 14.**  
**Full-time Personnel by Age**  
**Fall Semester 2000**

[Return to Table of Contents](#)

<b>Age Range</b>	<b>Number of Full-time Employees</b>
<b>under 20</b>	0
<b>20-29</b>	4
<b>30-39</b>	15
<b>40-49</b>	58
<b>50-59</b>	47
<b>60-69</b>	12
<b>70 &amp; over</b>	1
<b>Total</b>	137

*Source: LFCC Personnel Records*

*It is important to note that many full-time employees who are over 50 years of age (43.8%) may be eligible for retirement under the revised Virginia Retirement System guidelines. Also, 86.1% of the employees are over 40 years of age. This potential turnover will have a significant impact on the College.*

*Notes:*